

**StV Artificial Intelligence**  
Artificial Intelligence



# Study Guide for Artificial Intelligence

Students' Union  
Artificial Intelligence

*ai@oeh.jku.at*

30. August 2023

## Welcome at the TNF

When you read this, you are either already enrolled in a technical course at JKU, or at least show great interest in it. Congratulations! JKU's technical departments in particular enjoy an excellent international reputation, and graduates of all TNF studies have excellent job prospects. The TNF has approximately 5700 students and is the most diverse faculty of the JKU with over 30 different studies.

At the beginning of a new course of study, it takes time to get to grips with the university or to get to know the course of study better. These are reasons of which often questions or problems arise that make you unsure of what to do. This is where we—the ÖH TNF—come into play. Do not hesitate to contact us if you have any questions or problems. We always have an open ear and will do our best to help you. The best way to reach us is to send us an e-mail or to come directly to one of the StV consulting cafés at the TNF-Kammerl (I.1.3). You can find out more about this in this brochure—it should serve as a guide for starting your studies and hopefully already answer many of your questions.

The ÖH TNF is subdivided into 12 different student unions (StV) which, depending on what you are studying, represent your interests and advise you on problems with courses or professors. In this brochure you can find out who is in charge of which studies and how you can reach them. The first part provides you with general information about the university and your studies. The second part was written by your StV, is tailored to your studies and offers further information to help you get off to a successful start. Besides our homepage ([www.oeh.jku.at/abschnitte/technik-und-naturwissenschaften](http://www.oeh.jku.at/abschnitte/technik-und-naturwissenschaften)) and e-mail ([tnf@oeh.jku.at](mailto:tnf@oeh.jku.at)) you also have the possibility to contact us via Instagram: [instagram.com/oehtnf](https://www.instagram.com/oehtnf).



On behalf of the entire ÖH TNF, I wish you every success in your first or new semester and a good start to your studies—I hope we see you over a cup of coffee in the TNF-Kammerl or at another of our many events.



Helena Fitze  
Chairwoman of the ÖH Faculty Representation TNF  
[helena.fitze@oeh.jku.at](mailto:helena.fitze@oeh.jku.at)

# Inhaltsverzeichnis

<b>I</b>	<b>General Information for Studies at the TNF</b>	<b>4</b>
I.1	What is the ÖH? . . . . .	4
I.1.1	Structure & Outline . . . . .	4
I.1.2	Contact Data . . . . .	5
I.1.3	The TNF-Kammerl . . . . .	6
I.2	Studying at the TNF . . . . .	7
I.2.1	5 steps to studying at JKU TNF . . . . .	7
I.2.2	Study Manual / CEUS . . . . .	7
I.2.3	JKU Campus Map . . . . .	9
I.2.4	The academic year - dates and deadlines . . . . .	10
I.2.5	JKU Card and Service Points . . . . .	11
I.2.6	Kepler University Study Support System (KUSSS) . . . . .	11
I.2.7	Types of Courses . . . . .	12
I.2.8	Completion of the Bachelor's programme . . . . .	14
I.3	About the Studies . . . . .	16
I.3.1	Preparatory courses at the JKU for TNF students . . . . .	16
I.3.2	Wi-Fi, E-mail, Eduroam and Software for Students . . . . .	16
I.3.3	ÖH Mensabonus, Mensen and Cafés . . . . .	18
I.3.4	Helpful services of the ÖH . . . . .	18
I.3.5	USI - UniversitySPORTSInstitute . . . . .	19
I.3.6	First-Semester Tutorial (ET) / Mentoring . . . . .	19
I.3.7	Events . . . . .	20
I.3.8	Student Homes, Dormitories & Bars . . . . .	21
<b>II</b>	<b>Details for Artificial Intelligence</b>	<b>23</b>
II.1	Study Start . . . . .	23
II.1.1	StEOP . . . . .	23
II.1.2	AI-Mentoring . . . . .	24
II.1.3	Accreditation . . . . .	24
II.1.4	Starting your studies in the summer term . . . . .	25
II.2	The AI Program . . . . .	26
II.2.1	Study Commission (Studienkommission, StuKo) . . . . .	26
II.2.2	Overview of the Artificial Intelligence Bachelor's Program . . . . .	26
II.2.3	Overview of the Artificial Intelligence Master's Program . . . . .	26
II.2.4	The Curricula . . . . .	28
II.2.5	Distance Learning in the AI Program . . . . .	29
II.3	The Students' Union . . . . .	29
II.3.1	Services of the Students' Union Informatik & AI . . . . .	33
II.4	Woking while Studying . . . . .	33

# I General Information for Studies at the TNF

## I.1 What is the ÖH?

The ÖH (Österreichische Hochschülerinnen- und Hochschülerschaft) is the legal representation of the interests of all students in Austria. It represents the students in various committees and takes care of their concerns and problems. For each field of study there is a team of study representatives who can always help you with their experience.

### I.1.1 Structure & Outline

At the top is the federal representation (BV) of the ÖH. It receives all ÖH contributions, which are later distributed to the respective university representatives (UV). The Federal Constitution lays down general guidelines and the tasks of the respective UVs.

The university representation is responsible for the higher-level organisation of the ÖH at the respective university. Like the BV, it is determined every two years by the election of parliamentary factions or lists. The UV determines, for example, which divisions are to be established at the respective university.

The respective faculty representation (FakV) is located under the UV. The JKU has the following four faculties:

- the SOWI (Faculty of Social and Economic Sciences),
- the RE (Faculty of Law),
- the TNF (Faculty of Science and Technology) and
- the MED (Medical Faculty).

Each of these faculties has its own faculty representation, which is made up of elected members of the respective study representatives. The FakV is responsible for the organisation within its own faculty and serves as the coordinator for the student unions (StV). It is also the link between the unions and the UV.

The Student Representations are your first point of contact if there are problems with courses or lecturers or if questions arise regarding your studies.

## I.1.2 Contact Data

During the semester, the individual student representatives hold office hours at the ÖH TNF office (TNF-Kammerl in the Kepler building, see I.1.3). The times entered here are valid for the coming semester, but are subject to change. Current office hours will be posted in front of the TNF-Kammerl at the beginning of the semester.

<b>Fakultätsvertretung TNF</b> <i>tnf@oeh.jku.at</i>	All Studies
<b>StV AI</b> <i>ai@oeh.jku.at</i> Tuesday, 10:15-11:45	Artificial Intelligence (BA, MA)
<b>StV Chemie</b> <i>chemie@oeh.jku.at</i> tbd	Chemistry and Chemical Technologies (BA, MA) Biological Chemistry (BA, MA) Polymerchemistry (MA) Management in Chemical Technologies (MA)
<b>StV Elektronik und Informationstechnik</b> <i>elektronik@oeh.jku.at</i> Thursday, 10:15-11:45	Elektronik und Informationstechnik (BA, MA)
<b>StV Informatik</b> <i>informatik@oeh.jku.at</i> tbd	Informatik (BA) Computer Science (MA)
<b>StV Kunststofftechnik &amp; Maschinenbau</b> <i>kunststofftechnik@oeh.jku.at</i> <i>maschinenbau@oeh.jku.at</i> Tuesday, 10:15-11:45	Sustainable Polymer Engineering and Circular Economy (BA) Mechanical Engineering (BA, MA) Polymer Technologies and Science (MA) Management in Polymer Technologies (MA)
<b>StV Lehramt</b> <i>lehramt@oeh.jku.at</i> tbd	Lehramt Sekundarstufe (BA, MA)
<b>StV Mathematik</b> <i>mathematik@oeh.jku.at</i> Thursday, 12:00-13:30	Technische Mathematik (BA) Computational Mathematics (MA) Industrial Mathematics (MA) Mathematik i.d. Naturwissenschaften (MA)
<b>StV Mechatronik</b> <i>mechatronik@oeh.jku.at</i> Thursday, 10:15-11:45	Mechatronik (BA, MA) Medical Engineering (BA) MaschineTuesday, 13:45-15:15 nbau (BA, MA)
<b>StV NaWi-Tec</b> <i>nawitec@oeh.jku.at</i> Thursday, 12:00-13:30	Naturwissenschaftliche Grundlagen der Technik (BA)
<b>StV Physik</b> <i>physik@oeh.jku.at</i> tbd	Technische Physik (BA, MA) Molekulare Biowissenschaften (BA) Molekulare Biologie (MA) Biophysik (MA) Nanoscience- and Technology (MA)
<b>StV Medical Engineering</b> <i>medeng@oeh.jku.at</i> Monday, 12:00-13:30	Medical Engineering (BA, MA)
<b>StV Doktorat TN</b> <i>tnf-doktorat@oeh.jku.at</i>	Doktoratsstudium Naturwissenschaften Doktoratsstudium Tech. Wissenschaften
<b>StV ReWiTech</b> <i>rewitech@oeh.jku.at</i>	Recht und Wirtschaft für TechnikerInnen (MA)

### I.1.3 The TNF-Kammerl

The TNF-Kammerl (roughly translated, the TNF-chamber) consists of two rooms and is the headquarters of the ÖH TNF. During office hours you can exchange ideas with your student representatives and other students over coffee and cake. If you have any questions, but no time to come by in person, send an e-mail to ÖH TNF ([tnf@oeh.jku.at](mailto:tnf@oeh.jku.at)) or to your student representative and we will make a separate appointment with you. The TNF-Kammerl is located in the Keplergebäude/Hörsaaltrakt diagonally opposite the Sparkasse branch (the exact room number is HT0021E).



## 1.2 Studying at the TNF

### 1.2.1 5 steps to studying at JKU TNF

All beginnings are difficult, even when studying. That's why we show you the start of your studies in five steps. These steps should serve as a guideline for the first months at JKU. Further details can be found in this guide, online on the listed websites or on request by e-mail.

- Use the online pre-registration ([jku.at/voranmeldung](http://jku.at/voranmeldung)).
- Immatriculate at the department for teaching and study organisation in the bank building (Zulassungsservice/admissions service, Ground Floor next to the Kepler Society). Here you will receive your matriculation number, which will accompany you throughout your entire university life, you can enrol for your desired field of study and you will receive your JKU Card.
- Pay the ÖH contribution (now only by bank transfer - more information in the KUSSS in "Tuition fee").
- Register in the KUSSS ([kuss.jku.at](http://kuss.jku.at)) for the courses and attend the first date of each LVA (even if there is no obligation to attend, if you were not accepted, or if you were accepted in the wrong group).
- Ask your student union about further steps, such as crediting. This works best with a cup of coffee in the TNF-Kammerl. Just come to our office café or send us an email ;-)

Optional:

- Visit the study counselling days and get valuable tips before you start your studies.
- Set up your email address (more info at 1.3.2).
- Take part in the first semester tutorial: Get to know new people and gather insider knowledge about leisure activities at the university (You can get more information at the beginning of the semester and under 1.3.6).
- Visit the ET-Mensafest and celebrate yourself at the beginning of your studies.
- Check with the social services (Sozialreferat) department for possible subsidies and grants.

### 1.2.2 Study Manual / CEUS

In the study manual ([studienhandbuch.jku.at](http://studienhandbuch.jku.at)), also called CEUS, the individual courses of the JKU are described. Among other things, it specifies which course a course of study (LVA) belongs to, what content is taught and how the grade in this LVA is achieved.





### I.2.3 JKU Campus Map

**Lecture Halls and Seminar Rooms** The names of the rooms follow this pattern:

- first the letters of the building abbreviation
- then the floor number,
- followed by the room number.  
Example: S3 219 = Science Park 3, 2<sup>nd</sup> floor, Room 19

The lecture halls do not follow this pattern - they are simply abbreviated as HS (Hörsaal in german).

#### **B Hauptbibliothek**

**BA Bankengebäude** BA 9907, BA 9908, BA 9909, BA 9910, BA 9911, BA 9912 (in the basement)

**HF Hochschulfondsgebäude** HF 9901, HF 9904, HF 9905 (in the basement)

**HG Hörsaalgebäude** HS 9, HS 10

**HP Halbleiterphysik**

**HT Hörsaaltrakt** HS 2, HS 3, HS 4, HS 5, HS 6, HS 7, HT 177F, HT 176G

#### **J Juridicum**

**K Keplergebäude** HS 1, K 001A, K 009D, K 012D, K 033C, K 034D, K 112A, K 153C, K 224B, K 269D

**KG Kopfgebäude** KG 512

**MI Mikroelektronik**

**MT Mechatronik Science Park 1** MT 127, MT 128, MT 226, MT 226/1, MT 327

**MZ Managementzentrum** HS 15, HS 16, HS 17, MZ 003A, MZ 003B, MZ 005A, MZ 005B, MZ 112B, MZ 412A

**OIC LIT Open Innovation Center** Stufensaal

**P Physikgebäude** HS 8, P 004, P 215

**S2 Science Park 2** S2 044, S2 046, S2 048, S2 053, S2 054, S2 059, S2 Z74, S2 120, S2 219

**S3 Science Park 3** HS 18, HS 19, S3 047, S3 048, S3 055, S3 057

**S4 Science Park 4** S4 025

**S5 Science Park 5** S5 101, S5 102, S5 103

**T TNF-Turm** HS 11, HS 12, HS 13, HS 14, T 405, T 406, T 406/1, T 911

**UC Mensa und Uni-Center** Festsaal A-B, Loft B-D, UC6, Besprechungsraum 1-6

**Learning Zones** In almost every JKU building there are areas for students with seating and tables. These learning zones are equipped in different ways. Especially for technicians there are learning zones on the 1st floor of Science Park 1 and in the southern part of Science Park 2 and 3. These are equipped with enough sockets and good network access.

Furthermore a learning zone was additionally set up in the library, which is open 24 hours a day and also at weekends, further more there is the learning center, which is located on top of the main library. Your JKU Card must be activated to use the 24h learning zone. Simply contact the staff of the main library.

**Porter** The porter is located on the ground floor of the head building. The porter's office is manned around the clock. In addition to access control at the campus, the concierge also operates a lost property service. If you lose your JKU Card, for example, you have a good chance of finding it in the porter's office.

**External locations** In addition to the JKU campus, there are other external locations such as the Cam- Hagenberg campus, the MED campus, Gruberstraße, the Petrinum and rooms in the various student dormitories.

## 1.2.4 The academic year - dates and deadlines

Information about current deadlines and dates can be found on the JKU homepage at <https://www.jku.at/en/degree-programs/students/dates-deadlines/>

Here you will find important dates for the winter semester 2020/2021:

<i>Online Pre-Registration WS:</i>	10.07. to 05.09.2023
<i>Admission Period WS:</i>	10.07. to 05.09.2023
<i>Main Enrolment Period WS TNF:</i>	05.09. from 07:00 to 22.09.2023
<i>Allocation Results WS:</i>	29.09.2023
<i>Semester Start WS:</i>	01.10.2023
<i>Course-Start:</i>	02.10.2023
<i>Christmas Holiday:</i>	18.12.2023 to 06.01.2024
<i>Semester End WS:</i>	29.02.2024
<i>Semester Break:</i>	01.02. to 29.02.2024
<i>Period without Courses and Exams</i>	Sundays, public holidays, and 02.11.2023

### I.2.5 JKU Card and Service Points

The JKU Card is your digital student identity card. With this card you can take advantage of various offers of the university, such as e.g.:

- Library card — for lending books from the library
- Cafeteria card — your requested Mensa bonus see I.3.3 is stored on the card and can be linked to your NFC ATM card
- Parking ticket - with the JKU Card you can open the barrier to the parking lot. In addition to the daily rate, there is also a semester ticket for students, which can be purchased at *Building and Technology (Gebäude und Technik)* which is located in the head building (Kopfgebäude), room KG102.
- 24 Hours Learning Zone - To enter the 24 Hours Learning Zone, you must unlock your JKU Card in the Library.

**Service Points** The Service Points are electronic portals distributed throughout the campus. There you can activate your new JKU Card and have the validity date reprinted. These portals are available in the Physics Building first floor, Banking Building 1st floor during the opening hours of the admissions service, lecture hall tract corridor C and Science Park 3 ground floor. In the Petrinum, LiLes, Med Campus I, as well as in the Distance Learning Locations Bregenz, Villach and Vienna. Further information is available at <https://www.jku.at/en/degree-programs/students/start-your-studies/get-your-jku-card/>.



### I.2.6 Kepler University Study Support System (KUSSS)

The KUSSS ([kuss.jku.at](https://kuss.jku.at)) is the registration system for students. During the registration period — usually the last month before the beginning of the semester — all students can register for LVAs. The system also checks whether the prerequisites for a course of study have already been fulfilled. This means that you decide for yourself which courses you want to attend!

If you have passed an exam, this will also be entered in the KUSSS. Thus you can follow your entire progress in the KUSSS. The KUSSS also offers the option of exporting the dates of courses to the iCal format. This allows you to import your courses into your calendar on your PC or phone. In addition, with myJKU ([my.jku.at](https://my.jku.at)) it is possible to use most of the functions of KUSSS on your smartphone.

## I.2.7 Types of Courses

- VO/VL:** Lectures are courses in which the subject matter is usually taught in the form of presentations. There is no obligation to attend, but a regular attendance is useful for a better understanding of the material. At the end of the lecture there will be a written exam and/or an oral examination.
- UE:** Exercises are held to accompany lectures and have the purpose of reinforcing the material presented by means of examples. Usually there are homework exercises, which are carried out independently.
- PR:** During an practical course, your theoretical knowledge will be put into practice and, for example, a measuring circuit will be set up.
- KV:** Combined courses are, as the name suggests, a mixture of lecture and exercise. The subject area is explained as a lecture and learned in a practical part.
- SE:** In seminars, a part of the subject area is usually developed and then presented on one's own responsibility.

**Types of Allotment** In the KUSSS there are different ways to get from the registration of a LVA to the allocation. The type of allocation is indicated in the KUSSS registration page of each LVA above.

- **Allocation according to sequential order:** First come, first served. The time of registration is essential. If a registration is changed (e.g. by changing the exercise group), the last change is used.
- **Direct allotment:** As in the case of allocation according to sequence, the registration date is decisive. However, the registration is carried out immediately.
- **Allocation according to precedence number:** The registration time is insignificant, because the waiting bonus and the part-time bonus are essential here. If there are still too many of the same order, a random number decides.

There are only a few compulsory courses in the TNF that offer too few places for all interested students. Therefore, the priority number does not play an important role for us. Especially with free LVAs and especially with language courses, the number of places is often very limited. You can find further information under <https://www.jku.at/en/degree-programs/students/kusss/kusss-faqs/class-allocation/>.

**Exams and Tries** If you want to take an exam, you usually have to register for it in the KUSSS. If you change your mind later and still cannot or do not want to take the exam, please unsubscribe from the exam in time or inform the exam administration by e-mail.

Generally, you have five tries to each exam/course. No negative assessment can be made for non-performance. At your third start you have the choice to take the exam on a commission basis. This means that two more professors will correct the examination. The fourth and fifth examinations are always commission-based. If you have not passed the exam/course after the fifth start, you can no longer complete your studies.

**Note that if you are taking courses at more than one university, there may be fewer entries will be made available on each exam/course.**

If you have any problems, please contact your student representative in a timely manner.

**Minimum Number of credits** As of the winter semester 2022/2023, all first-year students in bachelor and diploma studies are required to complete a course of study of at least 16 ECTS in the first four semesters. The ECTS for the achievement of the minimum study performance after four semesters can be taken in the winter semester by March 31 and in the summer semester by October 31. You can find more information at <https://www.jku.at/en/degree-programs/students/minimum-number-of-credits/>.

**Recognition** Under certain conditions, you can have an examination or other achievement completed outside of your degree programme recognised for your degree programme. Recognition is granted if there are no significant differences between the learning outcomes of the completed performance and the target examination of your degree programme. This recognition must be applied for at the Examination and Recognition Service within the first two semesters. Further information on this can be found in the details on your details further down in the guide.

**Free LVAs** In addition to the compulsory subjects and subjects that you choose as a subject consolidation of your knowledge, there are also so-called *free courses*. How many of them you have to complete is indicated in your curriculum in ECTS.

For the free courses you can collect ECTS from all courses at the JKU which are not listed in your compulsory subjects. You can also count subjects from other universities (e.g. from abroad) as free courses.

Many students attend the course *Scientific writing and layout using LaTeX*. This course is divided into 2 parts and provides basic knowledge about the typesetting program  $\LaTeX$ , which is used for almost all scientific work in the technical field.

Furthermore, language courses are offered at the JKU, which are often used as free courses and can be especially useful for stays abroad. If you are a technician and would like to improve your English vocabulary, you can do this especially in the course *Advanced English for Science, Technology and Law - Level B2* by Prof. Pree.

## 1.2.8 Completion of the Bachelor's programme

It will take a little while before you complete your Bachelor's degree, but we would like to tell you a few things you should watch out for in advance. For information on what to do when graduating, see <https://www.jku.at/en/degree-programs/students/degree-completion/>.

**How do I complete my Bachelor's degree?** The curriculum lists all the courses required to complete the Bachelor's programme. On CEUS ([studienhandbuch.jku.at](http://studienhandbuch.jku.at)) you will find a complete list of all compulsory and elective courses:

Once you have completed all courses and the Bachelor thesis, you can apply for the Bachelor degree at the Examination and Recognition Service (Bankengebäude/101B). The Bachelor's programme is completed with the date of the last required course grade or optionally on the day of application.

**How and when can I find a Bachelor thesis?** Usually you work on your bachelor thesis in your last semester. Of course, you can also start earlier.

A Bachelor's thesis is always supervised by an institute. Many institutes list available topics on their homepages and course heads point out current topics in their courses. If you have found a topic in this way, it is advisable to arrange an appointment for an interview with an employee of the institute by e-mail. Of course, you can also submit your own well-considered topic suggestions to many institutes. A bachelor thesis can also be prepared externally (e.g. in your company). However, you must first find an institute that will take care of the supervision and ultimately assess your work.

Some student representatives regularly organise bachelor information evenings for you, where, in addition to general information, institutes also present their field of research and available topics. Another source for finding topics is the ÖH JKU thesis exchange at [www.oeh.jku.at/boerse/abschlussarbeiten](http://www.oeh.jku.at/boerse/abschlussarbeiten).

**What do I have to hand in to the Examination and Recognition Service?** Before you go to the Examination Division, you must complete the Examination Grid. This can also be found under <https://www.jku.at/en/degree-programs/students/degree-completion/>. All grades and the corresponding examination date must be filled in the grid. In the KUSSS under Exams - Help Examination Rosters you can print out a fill-in aid which lists your courses structured according to the current examination grid.

The examination grid can also be submitted incompletely shortly before the end of your studies (if you are only missing one grade), which can shorten the processing time in the examination service in the case of final submission.

**I would like to take subjects from the Master's programme before graduating. Is that possible?** Yes, you can! In many cases, subjects from the Master's programmes are offered as special subjects in the Bachelor's programme. In order not to completely disrupt the timetable of your studies, we recommend that you complete your Bachelor's degree in a timely manner and only then fill your semester with courses from the Master's curriculum.

**Caution!** If you have already completed Master's courses in your Bachelor's programme, you should not have these credited as free course! Otherwise, it is very difficult to complete your following Master's course!

**How are the overall grades for the Bachelor's degree calculated?** The certificate consists of the overall grades of the subjects, which are broken down in the respective examination grid. The examination service calculates the overall grades from the subjects that consist of several examination units as follows:

- Sum of the course scores multiplied by the corresponding ECTS.
- Divided by the total number of ECTS in the subject.
- The result is rounded, if necessary, and rounded up if the result is .5 or higher.
- Courses concluded with "Participated successfully" are not included in the overall grade. For an overall grade to be formed, at least half of the courses of the subject must therefore be graded.

**Further steps and master entry** The processing of the examination grid by the examination service takes 1-2 weeks. Once the processing is completed, you will find the overall grades in the KUSSS under Exams - Results on my exams at the bottom of the page.

Now it is possible to enrol at the admissions service (Bankengebäude/B113A) for the Master's programme. Alternatively, the next course of study can be directly selected at the end of the examination roster. If you enrol for a postgraduate Master's programme, the general admission deadlines do not apply! You can register at any time.

You can pick up your Bachelor's certificate about a week later from the Examination and Recognition Service, but it is not required to register for the Master's programme.

**To be noted for the time between Bachelor's and Master's studies** It should be noted that you are not officially considered a student in the period between the Bachelor's degree (i.e. the date of the last examination or the date of issue of your last certificate) and enrolment in a Master's programme. This means that you are not allowed to take exams or write exams during this time. If this cannot be avoided, you should talk to the examiner in advance to see if she could give you the grade with a different date. This should normally not be a problem. Furthermore, you are no longer officially insured as you are "not a student". The whole thing is just a bureaucratic restriction, but unfortunately you have to live with it.

## 1.3 About the Studies

### 1.3.1 Preparatory courses at the JKU for TNF students

In order to make it easier for first-semester students to start at TNF, preparatory courses are offered before the actual start of their studies. In these courses, essential contents of secondary school subjects are repeated in a condensed form and prepared for the introductory lectures. For first-year students without programming experience, the basis for successful participation in the programming courses is laid.

Participation is voluntary. Since experience has shown that previous knowledge differs, the preparatory courses are aimed particularly at those first-year students who want to close specific gaps in their knowledge or whose university entrance qualification dates back some time.

The JKU offers the following preparatory courses in the winter semester:

- Mathematics for various courses of study
- Mathematics intensive course for students of mechatronics, electronics and information technology and plastics engineering (during the semester, from October to December)
- Introductory physics week.
- Physical Foundations of Electrical Engineering and Mechanics
- Practical Programming Knowledge (Java) and Python Programming (especially for AI)

You can find out more about the preliminary courses online at

<https://www.jku.at/en/degree-programs/students/preparation-courses/>.

### 1.3.2 Wi-Fi, E-mail, Eduroam and Software for Students

The JKU will provide you with an eduroam account with your enrolment. This account gives you an email address, Wi-Fi access, KUSSS access, Moodle access, etc. This means that you can log in with your username and password to all services of the university. The username is *k<matriculationnumber>@students.jku.at*, e.g. *k01234567@students.jku.at*. You can change your password on *account.jku.at*. Further information can be found on [help.jku.at/im/en/jku-account](http://help.jku.at/im/en/jku-account).

**Wi-Fi and eduroam** There are two wireless networks on campus: JKU and eduroam. In the JKU network, after connecting to a website, you log in with your matriculation number and your password. Unfortunately, this is limited to one device at a time and is not encrypted. eduroam, on the other hand, is encrypted, can handle several devices at the same time and is also offered internationally. This means that you can also use eduroam offers in other countries. When connecting to eduroam you log in with *k<matriculationnumber>@jku.at*. The eduroam password can be changed on *account.jku.at*. For more information, see <https://help.jku.at/im/en/netzwerkzugang/campus-wireless-lan>.



**E-Mail** All students have an e-mail forwarding service from the JKU. This allows you to register for services that offer you as a student special conditions, such as software licenses. All e-mails to this address will be forwarded to the private e-mail address entered in the KUSSS. Further information can be found at [help.jku.at/im/en/e-mail-kalender/e-mail-fuer-studierende](https://help.jku.at/im/en/e-mail-kalender/e-mail-fuer-studierende).

**Software for Students** Software is partly needed during the studies to be able to fulfill tasks of some LVAs. In these cases you will usually be told in the LVA where the required software is available. On <https://help.jku.at/im/en/software/software-fuer-studierende> you will find a small compilation of the offered software.

**Microsoft licenses for Technicians (MS Imagine)** As student of the TNF you can purchase licenses of many Microsoft legally and for free. You will find more informations (currently in German) at [oeh.jku.at/microsoft-lizenzen-azure-dev-tools](https://oeh.jku.at/microsoft-lizenzen-azure-dev-tools).

**Microsoft Office 365 ProPlus** Since 2016, the Microsoft Office 365 ProPlus package has also been available free of charge to all JKU students. This license allows you to install and use Microsoft Office including updates on up to 5 PCs or Macs, 5 tablets and 5 smartphones and you get 1TB of additional storage space with Microsoft OneDrive. For more information, see <https://help.jku.at/im/en/software/software-fuer-studierende>.

### 1.3.3 ÖH Mensabonus, Mensen and Cafés

If you study hard, you have to eat. Since this costs a lot of money, the ÖH Mensabonus was introduced a few years ago. With this bonus you get the menu or the vegetable plate in the canteen a lot cheaper.

You can apply for the Mensabonus in the KUSSS under *Personal data — Austrian Student Union Cafeteria (Mensa) discount*. The next time you visit a service point, a "M" will be printed next to the date on the JKU card.

- The **JKU Mensa** is located in the Uni-Center. Here you can choose between 2 menus and the Choice-Mensa-Markt.  
<https://www.mensen.at>
- The **KHG-Mensa** is located on the ground floor of the student home KHG.  
[dioezese-linz.at/khg/mensa/menuplan](https://dioezese-linz.at/khg/mensa/menuplan)
- The **Raabheim-Mensa** you'll find at the Raabheim. The menu is online at [www.sommerhaus-hotel.at/de/linz#restaurant](http://www.sommerhaus-hotel.at/de/linz#restaurant).
- The **Chöt-Cafe** is located in the Keplergebäude/Hörsaaltrakt and offers a different soup every day in addition to various bread rolls and snacks.  
<https://www.mensen.at>
- The **Science-Cafe** is located on the ground floor of Science Park 3.  
<https://www.mensen.at>
- The **Teichwerk** swims hardly to be overlooked in the pond.  
[dasteichwerk.at](http://dasteichwerk.at)
- The **Kuyo** is located next to Thalia on the Bibliotheksplatz.  
<https://www.manuelgrabner.at/daskuyo/>
- The **SPAR Digital Flagship Store** is located in the Open Innovation Center (OIC).  
[www.spar.at/regionales/oberoesterreich/spar-am-campus-derjku](http://www.spar.at/regionales/oberoesterreich/spar-am-campus-derjku)

### 1.3.4 Helpful services of the ÖH

The ÖH JKU offers a number of helpful services, which we will present here shortly.

- **Sozialreferat:** They are experts on various topics concerning financial aids and study fees, accessibility, insurance etc.
- **Referat für Migration und Integration:** If you are a student coming from abroad, the ReMi will help you with your visa and admission, supplementary tests etc., but also with integration as a whole.
- **Referat für Frauen, Gender und Gleichbehandlungsfragen:** This referat can help you when you have to deal with discrimination or sexual harassment.
- You can find more Services at <https://oeh.jku.at/referate>.

### **1.3.5 USI - UniversitySPORTSInstitute**

The University Sports Institute (USI) at JKU Linz offers numerous, mostly weekly courses in various sports at reasonable prices during the semester. The extensive offer includes common sports such as volleyball and climbing, but also some martial arts and various dance courses. In the winter semester, the practice starts on 1 October, registration is possible online from mid-September. In the summer semester, the course starts on 1 March and the registration period begins in mid-February. The USI also has a fully equipped fitness room with strength and cardio machines. You can find more information on <https://www.jku.at/en/campus/recreation/sports-exercise/>.

### **1.3.6 First-Semester Tutorial (ET) / Mentoring**

The first semester tutorial (short: ET, sometimes also called Mentoring) is another contact point for you in the first semester. The aim of the tutorial is to make it easier for you and all other first-semester students to start their studies.

A group of motivated students from the TNF, who also once stood at the beginning of their studies, will accompany you through the first semester. You can choose this group yourself at an interview (first university week). If you don't have time for the interview, you can simply write an email to [elias.prohaska@oeh.jku.at](mailto:elias.prohaska@oeh.jku.at) and you will be assigned to a group, where we of course take your interests into consideration.

Your ET group will then offer weekly meetings to get to know other freshmen and university life and to escape the everyday life of studying. The joint activities of the groups range from cooking together to game evenings, ice skating, barbecuing, bowling, cinema, film evenings to going out together and home bar rounds. Here, too, the events of the groups vary.

All activities are voluntary and you are of course not obligated to come if you don't have time. Every appointment should be fun, we want to be your contact person for all questions and offer help where you need it.

I'm looking forward to seeing you!  
Anna-Malin Draxler, Head of ET-TNF  
[anna-malin.draxler@oeh.jku.at](mailto:anna-malin.draxler@oeh.jku.at)

### 1.3.7 Events

Students who complete a technical course of study face one of the most difficult challenges to overcome at university level. Of course, there must also be some variety to compensate for this. The ÖH TNF organizes some festivals for this purpose:

**Debut Parties:** At the end of October we organize the TNF debut parties in the Mensakeller. All students and teachers of the respective faculty are invited. The debut parties are of course specially designed for first-semester students in order to get to know people from higher semesters. In the cafeteria cellar, on three consecutive days, there will be the computer science/AI/electronics "Einstandsfest", the chemistry/plastics "Kükenfest" and then the mathematics / physics & MoBi / teaching profession / NaWi-Tec (MPL-Tec) Einstandsfest. Once a year one of the mechatronics institutes organizes the Beer and Brezn festival together with the StV for the faculty.

**Punch Stand:** The ÖH TNF punch stand has meanwhile become a fixed winter feature. Usually it takes place on Tuesday in the 2nd week of December. At the library square we spoil you with delicious punch and mulled wine. As it is appropriate for a punch stand, there are delicious homemade biscuits and raclette breads.

**JKU GAMES:** The ÖH TNF organises the JKU GAMES every semester. Divided into LAN and DICE, Pen&Paper, Puzzle, various group games and a LAN party are played with and against each other over the weekend. If you want to take part, find out more at [games.oeh.jku.at](http://games.oeh.jku.at).

**StV-Grillereien:** In the summer semester, your StV organises a barbecue similar to the opening celebrations in autumn, to which the students and teachers of the respective faculty are invited.

**ÖH TNF Summer Barbecue:** Once a year there is the big traditional ÖH TNF summer barbecue. This takes place at the beginning of June in the university park. Highlights of this event are the organic piglets, meat from organic farming, live ice cream production on site with liquid nitrogen and much more. This event is the flagship of ÖH TNF and is well attended every year. Those who are not present are to blame themselves :-).

**Eval Day** Once a semester, we host the *Eval Day*. This should give you the opportunity to end the semester with other students and to evaluate the teachers of the courses you have attended. With the evaluation you offer the professors important feedback to improve the courses for the future.

### I.3.8 Student Homes, Dormitories & Bars

#### **Internationales Studierendenzentrum Julius Raab (Sommerhaus)**

- Address:** Julius Raab Straße 10, 4040 Linz, [www.studentenwerk.at/studenten/raab](http://www.studentenwerk.at/studenten/raab)
- Bar:** available; Mensa open on weekdays
- Insider Info:** The dormitory has a fitness room and gyms, which can be used as part of the sports program of the University Sports Institute (USI). For more information see I.3.5.

#### **Wist Haus**

- Address:** Johann Wilhelm Kleinstraße 72, 4040 Linz, [www.wist.uni-linz.ac.at](http://www.wist.uni-linz.ac.at)
- Bar:** Wed. and Thu.
- Insider Info:** The home bar is located on the 13th floor of the home and offers weekly specials. In the summer semester the popular Wist Summer Party takes place.

#### **Evangelisches Studierendenheim (ESH)**

- Address:** Julius Raab Straße 1-3, 4040 Linz, [www.esh.jku.at](http://www.esh.jku.at)
- Bar:** unfortunately closed :-)
- Insider Info:** There are also seminar rooms in the basement of the ESH.

#### **Katholische Hochschulgemeinde (KHG)**

- Address:** Mengerstraße 23, 4040 Linz, [www.dioezese-linz.at/khg](http://www.dioezese-linz.at/khg)
- Bar:** Mostly Tue, Wed and Thu
- Insider Info:** In addition to the cellar bar in the basement, larger parties such as the autumn, spring and summer parties take place every year in the KHG. There are also workshops, lectures, concerts etc. every week.

#### **Johannes Kepler Heim**

- Address:** Altenbergerstraße 74, 4040 Linz, [jk-heim.at](http://jk-heim.at)
- Bar:** Wed
- Insider Info:** In the summer semester the Kepler Heim summer party takes place.

#### **Studierendenheim Akademikerhilfe (AHL)**

- Address:** Pulvermühlstraße 41, 4040 Linz, [www.akademikerhilfe.at/de/linz](http://www.akademikerhilfe.at/de/linz)
- Bar:** Mon, Wed, and Thu from 21:00
- Insider Info:** The home is located four tram stops from the university (St. Magdalena) and has a modern home bar with changing specials.

### **STUWO Student Housing (STUWO)**

**Address:** Altenbergerstraße 9, 4040 Linz, [www.stuwo.at/studentenheime/linz/](http://www.stuwo.at/studentenheime/linz/)

**Bar:** no bar

**Insider Info:** The home offers many student typical features, more on their website

### **MILESTONE Linz Brucknerstudios (Bruckner Studios)**

**Address:** Peuerbachstraße 28, 4040 Linz, [www.milestone.net/locations/?city=linz](http://www.milestone.net/locations/?city=linz)

**Bar:** no bar

**Insider Info:** The home offers many student typical features, more on their website

## II Details for Artificial Intelligence

Although the study program in Artificial Intelligence only exists since 2019, it has quickly become one of the largest programs at JKU. While this is largely due to the hype around the topic of AI, we believe that also both the good quality of the program and the beautiful study environment of JKU have had their part in it. In the following few chapters we'll try and teach you everything you need to know about studying AI at JKU.

### II.1 Study Start

At the beginning of your studies, there are other topics to consider in addition to registering for your studies.

#### II.1.1 StEOP

As a first-year student, you must complete the StEOP (Studies Introductory and Orientation Phase) before you can take further courses in higher semesters. At least 9 ECTS from the pool in the table below must be successfully completed. Until then, you can only complete a maximum of 21 further ECTS from the recommended curriculum of the 1st, 2nd and 3rd semesters.

In addition, during the StEOP you have only 3 repetition possibilities (i.e. 4 total attempts) for each examination. After successfully completing the StEOP, you can take each exam 5 times.

It is therefore highly recommended to complete the StEOP as quickly as possible in order to avoid delays in your studies. Courses that are credited are considered completed in the sense of the StEOP.

#### StEOP Core subjects (9 ECTS)

Course	Type	ECTS	Semester
Introduction to AI	VL	3.0	WS
Logic	VL	3.0	WS
Hands-on AI I	VL	1.5	WS
Hands-on AI I	UE	1.5	WS
Programming in Python I	VL	3.0	WS
Programming in Python I	UE	3.0	WS
Mathematics for AI I	VL	6.0	WS
Hands-on AI II	VL	3.0	SS
Hands-on AI II	UE	1.5	SS
Programming in Python II	VL	1.5	SS
Programming in Python II	UE	1.5	SS
Algorithms and Data Structures 1	VL	3.0	SS
Mathematics for AI II	VL	6.0	SS

## II.1.2 AI-Mentoring

The AI-Mentoring is a program designed to make it easier for you to start your studies: A tutor (in this context a student of a higher semester) accompanies you in the first weeks as a direct contact point, holds regular meetings and is open for all your questions. There will also be an informal meeting with a professor (your mentor) sometime in the first semester. The aim of this program is to get you used to the everyday university life more quickly and to make new contacts. Your tutor is your go-to person if you ever feel a bit lost.

In the first lesson of the course *Lecture Series Artificial Intelligence* we will introduce ourselves to you and arrange the mentoring groups. In the following weeks we will meet regularly to exchange experiences in a relaxed atmosphere, share useful information about studying, solve problems in everyday study life and bring you closer to the offers of the JKU campus. The schedule includes a guided tour of the campus, a joint visit to our AI-Café, the „Informatik-Stammtisch“, the „Einstandsfest“ and much more.

**The mentoring is a mandatory part of the course *Lecture Series Artificial Intelligence* for all Bachelor students.**

## II.1.3 Accreditation

If you have already enjoyed an education that can be accredited in the AI program, you can skip some courses in the first semesters. The grade of an accredited course, according to the following table, is based on the average grade of the corresponding school certificates in the accredited school subject.

### HTL Informatik (e.g. Grieskirchen, Leonding, Perg)

Course/Lecture	ECTS	accredited for the teaching subject
Algorithms and Data Structures 1	3VL+1.5UE	Programmieren und Software Engineering (1.-3. grade)
Programming in Python I	3VL+3UE	Programmieren und Software Engineering (1.-3. grade)

### HTL Informationstechnologie/Informations- und Kommunikationstechnologie (e.g. LiTec, Traun, Wels, Ybbs)

Course/Lecture	ECTS	accredited for the teaching subject
Algorithms and Data Structures 1	3VL+1.5UE	Softwareentwicklung (2.-3. grade)
Programming in Python I	3VL+3UE	Softwareentwicklung (1.-5. grade)

### HTL Biomedizin- und Gesundheitstechnik, Ausbildungsschwerpunkt Medizininformatik (e.g. Grieskirchen)

Course/Lecture	ECTS	accredited for the teaching subject
Programming in Python I	3VL+3UE	Medizin- und Gesundheitsinformatik (1.-5. grade)

In order to receive the credits listed above, you have to bring all school certificates to the examination and recognition service (Bank Building/101B) and apply for them. In case of deviations, problems or questions, please contact:

**Jenny Joana Knauth, MA** (*office@ai-lab.jku.at*):

We recommend to carry out recognition as soon as possible (immediately after enrollment, preferably before the start of the semester).



## II.1.4 Starting your studies in the summer term

Generally, beginning your academic journey during the summer term is not our preferred recommendation. Nevertheless, we recognize that individual circumstances, such as mandatory military or civilian service commitments, might necessitate this choice. In such cases, we advise following the 2nd semester's course schedule from the recommended study plan.

If you're coming in with existing (Python) programming expertise, you can confidently dive into *Programming in Python II*. On the other hand, those new to programming should hold off until the winter term to start with *Programming in Python I*.

Similarly, attempting *Mathematics for AI 2* without the foundational knowledge from *Mathematics for AI 1* is discouraged. We suggest waiting for the winter term and embarking on *Mathematics for AI 1*, which provides an in-depth exploration of the necessary basics.

While the choice of courses and their timing ultimately rests with you, we emphasize the importance of adhering to the suggested study plan for a seamless learning experience.

For those initiating their studies in the summer term, the following courses are available:

- KV Technology and Society
- VL+UE Algorithms and Data Structures 1
- VL+UE Statistics for AI

If you have prior programming knowledge:

- VL+UE Programming in Python II
- VL+UE Hands-on AI II

Furthermore, students who've already achieved the STEOP through Accreditation (refer to section II.1.3 on Accreditation) are eligible to start with Free Electives and/or Area of Specialization courses.

A noteworthy mention is that *Hands-on AI II* and *Programming in Python II* are advanced courses. For *Hands-on AI II*, a foundational understanding of AI concepts is presumed, while both courses assume a solid grasp of programming. Ensure you're adequately prepared before enrolling.

## II.2 The AI Program

### II.2.1 Study Commission (Studienkommission, StuKo)

The Bachelor's Degree in Artificial Intelligence is represented by the student representation for Artificial Intelligence (StV AI). You can find out more about us at [oeh.jku.at/ai](http://oeh.jku.at/ai)

The study commission decides and improves on study plans. It is composed of 3 representatives of professors, 3 assistants (academic mid-level faculty), and 3 students. The student representation decides who is sent to the commission. Currently, it has the following members:

- Abdul Basit Banbhan
- Sarah Hauer
- Max Walder
- Daniel Kutasi (deputy)
- Shreif Shouman (deputy)
- Janis Traweger (deputy)

### II.2.2 Overview of the Artificial Intelligence Bachelor's Program

To make it easier to know about all the courses still left in your studies, we give you an overview over the artificial intelligence bachelor's program. It regularly lasts for 6 semesters, each semester containing 30 ECTS. The following table lists all courses required to finish the program.

Free electives (9 ECTS in total) can be freely decided upon without any restrictions. Areas of specialization (12 ECTS in total) must be selected from a pool with a wide variety of possible topics, e.g. Computer and Data Science, Mechatronics, Life Sciences or others. Please visit KUSSS for all possible choices. It is possible to select from different pools (e.g. 9 ECTS from Life Sciences and 3 ECTS from Mechatronics)

### II.2.3 Overview of the Artificial Intelligence Master's Program

For the sake of keeping this Study Guide short, decided to not exhaustively include information on the Master's Program. You can find all the necessary information under <https://studienhandbuch.jku.at/uk066993>

The key facts about the masters program, however, are the following: It has a regular duration of 4 Semesters á 30 ECTS per semester. While studying you will have to choose one of the following 4 Elective Tracks:

- AI and Mechatronics - Robotics and Autonomous Systems
- AI and Mechatronics - Embedded Intelligence and Signal Processing
- Symbolic AI and Mathematical Foundations
- AI and Life Sciences

For specific questions regarding the elective tracks or anything else please refer to the curriculum.

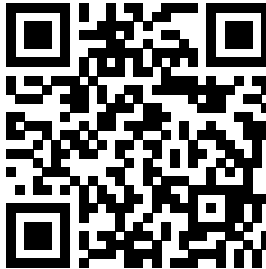
## Recommended Study Plan

Corse/Lecture	Hours per week	Lecturer	ECTS
<b>1<sup>st</sup> Semester</b>			
Hands-on AI I	1VL + 1UE	Schörgenhuber	1.5VL + 1.5UE
Introduction to AI	2VL	Fürnkranz	3.0
Lecture Series Artificial Intelligence	1VL	Lesota	1.5
Responsible AI	2KV	Mara	3.0
Programming in Python I	2VL + 2UE	Schörgenhuber	3VL + 3UE
Logic	2VL + 1UE	Seidl	3VL + 1.5UE
Mathematics for AI I	4VL + 2UE	Holzinger	6VL + 3UE
<b>2<sup>nd</sup> Semester</b>			
Hands-on AI II	1VL + 2UE	Schörgenhuber	1.5VL + 3UE
Technology and Society	2KV	Meyer	3.0
Algorithms and Data Structures 1	2VL + 1UE	Ferscha	3VL + 1.5UE
Programming in Python II	1VL + 1UE	Schörgenhuber	1.5VL + 1.5UE
Statistics for AI	2VL + 2UE	Forstner	3VL + 3UE
Mathematics for AI II	4VL + 2UE	Holzinger	6VL + 3UE
<b>3<sup>rd</sup> Semester</b>			
Artificial Intelligence	2VL + 1UE	Widmer	3VL + 1.5UE
Algorithms and Data Structures 2	2VL + 1UE	Ferscha	3VL + 1.5UE
Basic Methods of Data Analysis	2KV	Hochreiter	3.0
Visual Analytics	2VL + 1UE	Streit	3VL + 1.5UE
Machine Learning: Supervised Techniques	2VL + 1UE	Holzleitner	3VL + 1.5UE
Mathematics for AI III	4VL + 2UE	Holzinger	6VL + 3UE
<b>4<sup>th</sup> Semester</b>			
Seminar in AI	2SE	<i>various</i>	3.0
Learning from User-generated Data	2VL + 1UE	Schedl	3VL + 1.5UE
Formal Models	2VL + 1UE	Seidl	3VL + 1.5UE
Machine Learning: Unsupervised Techniques	2VL + 1UE	Hochreiter	3VL + 1.5UE
Machine Learning and Pattern Classification	2VL + 1UE	Widmer	3VL + 1.5UE
Computational Data Analytics	2KV	Fürnkranz	3.0
Numerical Optimization	2VL + 1UE	Benko	3VL + 1.5UE
<i>Area of Specialization</i>	1		1.5
<b>5<sup>th</sup> Semester</b>			
Practical Work in AI	6PR	<i>various</i>	8.0
Computational Statistics	2VL + 1UE	Bitto-Nemling	3VL + 1.5UE
Natural Language Processing	1VL + 1UE	Rekabsaz	1.5VL + 1.5UE
Computational Logics for AI	2VL + 1UE	Kutsia	3VL + 1.5UE
Reinforcement Learning	2VL + 1UE	Widmer	3VL + 1.5UE
<i>Area of Specialization</i>	2		3
<i>Free Electives</i>	2		3
<b>6<sup>th</sup> Semester</b>			
Gender Studies	2VL	<i>various</i>	3.0
Digital Signal Processing	2VL + 1UE	Huemer	3VL + 1.5UE
<i>Area of Specialization</i>	5		7.5
<i>Free Electives</i>	4		6.0
<i>Bachelor's Thesis</i>	6		9.0

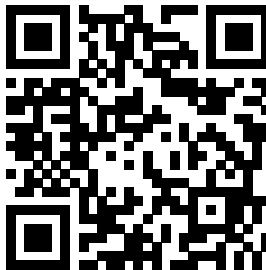
Source: <https://studienhandbuch.jku.at/curr/848>

## II.2.4 The Curricula

As mentioned above, the best resource for any more questions about the study programs are the curricula, so here are some QR codes that bring you to them.



Bachelor's Program:  
<https://studienhandbuch.jku.at/curr/848>



Master's Program:  
<https://studienhandbuch.jku.at/uk066993>

## II.2.5 Distance Learning in the AI Program

The AI program provides a substantial opportunity for Distance Learning, allowing students to access major parts of the curriculum remotely.

For those residing in Vienna or Bregenz, the Distance Learning experience is particularly enhanced. All mandatory courses come with a Distance Learning variant. Lecture halls within the Zentrum für Fernstudien are furnished with advanced streaming tools, letting students in Vienna or Bregenz attend JKU courses live. This interactive model allows students to engage with the lecturer in real-time, raising queries during the live session.

Courses labeled KV (Combined Course) and VL (Lecture) predominantly operate in Distance Learning format. For UE (Exercises), registration specific to Distance Learning is required. The mode of each course can be ascertained on KUSSS at <https://kuss.jku.at/> under the 'Mode' section.

All essential course sessions are recorded, and both videos and their associated slides are available on Moodle at <https://moodle.jku.at/>.

Examination venues include:

- JKU
- *Zentrum für Fernstudien Bregenz* located at Belruptstraße 10, 6900 Bregenz. More details can be found at <https://www.jku.at/zentrum-fuer-fernstudien/kontakt/bregenz>.
- *Zentrum für Fernstudien Wien* situated at Ehemalige Postsparkasse, Wiesingerstraße 4/2.Stock, 1010 Wien. For more information, visit <http://www.fernstudien.at/wien>.

Additional Information:

To embark on the AI program, students must visit Linz at least once for official enrollment. There will be instances where specific courses demand on-site attendance, either in Linz, Bregenz, or Vienna. Examinations necessitate physical attendance and can be taken in Linz, Bregenz, or Vienna throughout the semester.

The AI program's curriculum is tailored for students located near Linz, Bregenz, or Vienna. A significant number of AI courses are delivered either as a livestream or video conference from JKU's satellite campuses in Vienna and Bregenz.

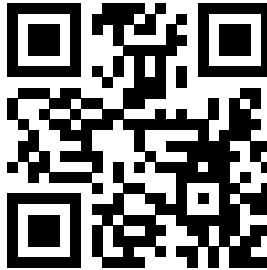
While courses are typically offered annually, enrollment during the Summer Semester to commence AI studies may require students to adjust their academic plans, especially since several courses begin in the Winter Semester and not at the start of the Summer Semester.

## II.3 The Students' Union

The Students' Union Informatik & AI (Studienvertretung, or simply StV in German) is elected every two years at the ÖH elections. Eligible to vote are all persons who are enrolled in a Informatik, Computer Science or Artificial Intelligence program (Bachelor or Master). The Students' Union is your first contact point - no matter if there are problems with teachers or a lecture, or if you want to know something else about studying.

You can reach the Students' Union Informatik & AI as follows:

- [oeh.jku.at/ai](https://oeh.jku.at/ai) is the information page of our Student Union. Here you can find current dates and events.
- [ai@oeh.jku.at](mailto:ai@oeh.jku.at) is available for all questions about studying.
- Join us on **Discord** via [discord.gg/wAek576](https://discord.gg/wAek576)
- [instagram.com/oehtnf](https://www.instagram.com/oehtnf)
- The **AI-Café**, every Tuesday during the semester from 10:15-11:45 in the "TNF-Kammerl", see also II.3.1



[discord.gg/wAek576](https://discord.gg/wAek576)

The Students' Union for Artificial Intelligence is responsible for students of the following studies:

- Bachelor's program Artificial Intelligence
- Master's program Artificial Intelligence

If you want to contact a Student's Union member directly, you can of course do so as well. Our team has the following members:

## Mandatory



**David Fleischanderl**  
Chairperson  
 *david.fleischanderl@oeh.jku.at*



**Abdul Basit Banbhan**  
1st Deputy  
 *abdul\_basit.banbhan@oeh.jku.at*



**Sarah Hauer**  
2nd Deputy  
 *sarah.hauer@oeh.jku.at*



**Benjamin Bergmann**  
Mandatory  
 *benjamin.bergmann@oeh.jku.at*



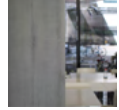
**Shreif Shouman**  
Mandatory  
 *shreif.shouman@oeh.jku.at*

## Members



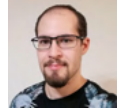
**Maja Drinovac**  
*maja.drinovac@oeh.jku.at*

**Lukas Gandler**  
*lukas.gandler@oeh.jku.at*



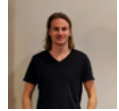
**Sebastian Kranzinger**  
*sebastian.kranzinger@oeh.jku.at*

**Daniel Kutasi**  
*daniel.kutasi@oeh.jku.at*



**Lucian Mayr**  
*lucian.mayr@oeh.jku.at*

**Sebastian Pockenauer**  
*sebastian.pockenauer@oeh.jku.at*



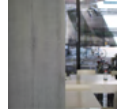
**Bernd Reisinger**  
*bernd.reisinger@oeh.jku.at*

**Roman Rittler**  
*roman.rittler@oeh.jku.at*



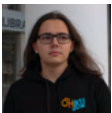
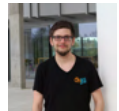
**Fathy Shalaby**  
*fathy.shalaby@oeh.jku.at*

**Sonja Topf**  
*sonja.topf@oeh.jku.at*



**Janis Traweger**  
*janis.traweger@oeh.jku.at*

**Markus Vogl**  
*markus.vogl@oeh.jku.at*



**Max Walder**  
*max.walder@oeh.jku.at*



### II.3.1 Services of the Students' Union Informatik & AI

The Students Union provides a large amount of services and events listed below. Every event will take place at least once a year:

**Cafe** We offer a consultation hour every Tuesday 10:15-11:45 during the lecture period. You may come and visit us in "TNF-Kammerländ ask us questions about your study or discuss exercises with fellow students or just enjoy free coffee and cookies with us. If you are interested be sure to self-assign the according role on our Discord to never miss it again!

**AI-Stammtisch** The *Stammtisch* is a regulars' table which takes place every month during lecture period. This is an evening where you can get together with other AI Students from JKU. Our favourite location for this is the *KHG Kellerbar* which provides a comfy environment and cold beverages of many kinds. Appointments for the Stammtisch are published by mail or in our Google-Calender.

By the way: The first drink will be paid by the Students' Union - so passing by is always a good choice!

**Einstandsfest** This event is one of the first in the winter semester and will take place at end of October or beginning of November. Every AI student is invited to come to the basement of the Mensa and familiarize with fellow students and Professors. The Students' Union will provide food, drinks and beer for free.

**StV Barbecue** In the summer term we organize — like the *Einstandsfest* in winter term — a barbecue for all TNF students which is happening over 3 days with different study programs being invited to different days. We also invite all teachers and Professors to this event. You may enjoy cold drinks and hot barbecue (including vegetarian options) to calm down in the stressful time at University.

## II.4 Working while Studying

In principle, studies are designed as full-time studies (30 ECTS). Since you can decide for yourself how many courses you want to take (at university), you can theoretically take less than 30 ECTS and work the rest of the time. Of course you have to take delays in your studies into account then, i.e. the minimum study time (3 years) will no longer be possible. In the Bachelor's programme, the official recommendation suggests you should start working no earlier than the 5th semester, though we do of course know that this is not possible for everyone financially. Generally, the number of ECTS you can/should do in a semester depends on the number of hours you have available and your previous knowledge. We will be happy to advise you on this. Drop us an email or a message on Discord.

The content of this section was largely taken from the StV Info & AI FAQ. There you can also find information on other common and important questions. To access it, scan the QR code below!



Frequently Asked Questions

## **Feedback?**

Is there anything in this guide you've been missing? Suggestions for improvement? Suggestions for changes? Just write to us at [tnf@oeh.jku.at](mailto:tnf@oeh.jku.at).

## **Notes**

