

Study Guide for the Bachelor Artificial Intelligence



**Student Union
Artificial Intelligence**

ai@oeh.jku.at

oeh.jku.at/ai

2 September 2025

Welcome to the TNF!

If you are reading this, you are either already enrolled in a technical degree program at JKU or at least show great interest in it. Congratulations! The technical departments at JKU enjoy an excellent international reputation, and graduates of all TNF programs have excellent job prospects. With approximately 7200 students, TNF is the largest, and with 38 different programs, the most diverse faculty at JKU.

When starting a new course of study, it takes time to find your way around the university and your degree program. For these reasons, questions or problems often arise that make you unsure of what to do. This is where we – the ÖH TNF – come in.



Please do not hesitate to contact us if you have any questions or problems. We are always happy to listen and will do our best to help you. The best way to reach us is via email or stopping by at one of our StV consulting cafés. You can find more information in this brochure – it should serve as a guide for starting your studies and will hopefully already answer many of your questions.

The ÖH TNF is subdivided into 11 different student unions (StV) which, depending on what you are studying, represent your interests and advise you on problems with courses or professors. In this brochure you can find out who is in charge of which studies and how you can reach them. The first part provides you with general information about the university and your studies. The second part was written by your StV, is tailored specifically to your course of study and offers further information to help you get off to a successful start. In addition to our website (oeh.jku.at/en/tnf) and email (tnf@oeh.jku.at), you can also contact us via Instagram: [instagram.com/oehtnf](https://www.instagram.com/oehtnf)



Website

oeh.jku.at/en/tnf



Instagram Account

www.instagram.com/oehtnf

On behalf of the entire ÖH TNF, I wish you every success in your first or new semester and a good start to your studies – I hope to see you sometime over a cup of coffee in the TNF-Kammerl or at one of our many events



Raffael Borris

Chair of the faculty representation TN

raffael.borris@oeh.jku.at

Contents

I	General information for TNF students	5
I.1	What is the ÖH?	5
I.1.1	Structure & Organization	5
I.1.2	Contacts	5
I.1.3	The TNF-Kammerl	7
I.2	Studying at TNF	8
I.2.1	4 steps to studying at JKU TNF	8
I.2.2	Studienhandbuch	8
I.2.3	JKU Campusmap	10
I.2.4	The academic year - dates and deadlines	13
I.2.5	JKU Card and Service Points	14
I.2.6	Kepler University Study Support System (KUSSS)	14
I.2.7	Types of courses	15
I.2.8	Completion of the bachelor's program	17
I.3	Around your studies	19
I.3.1	Preparation courses for students at TNF JKU	19
I.3.2	Wi-Fi, eduroam, email and software for students	19
I.3.3	ÖH Cafeteria discount, Cafeterias and Cafés	21
I.3.4	Helpful services	22
I.3.5	Institute Integriert Studieren	22
I.3.6	Help with mental health issues	23
I.3.7	USI – University Sports institute	23
I.3.8	First Semester Mentoring	24
I.3.9	Events	25
I.3.10	Student dorms & bars	27
II	Details for Artificial Intelligence	29
II.1	Start of Studies	29
II.1.1	StEOp	29
II.1.2	AI mentoring program	30
II.1.3	Accreditation	31
II.1.4	Starting in the summer semester	31
II.2	The AI program	33
II.2.1	Overview of the Artificial Intelligence Bachelor's Program	33
II.2.2	Overview of the Artificial Intelligence Master's Program	35
II.2.3	Curricula	37
II.2.4	All of our institutes and How to finish your studies	37
II.2.5	Distance Learning in the AI program	38
II.2.6	Study Commission (Studienkommission, StuKo)	38
II.3	The Student's Union	39
II.4	Services of the Student's Union for AI	42
II.4.1	AI Regulars' Table ("Stammtisch")	42
II.4.2	AI Cafe ("Sprechstundencafe")	43
II.4.3	Events	43
II.5	Working while studying	43
II.6	Conclusion	44
II.6.1	Space for your own notes	44

I General information for TNF students

I.1 What is the ÖH?

The ÖH (Österreichische Hochschüler_innenschaft, engl.: Austrian Student Union) is the legal representation of interests of all students in Austria. It represents the students in various committees and takes care of their concerns and problems. For each field of study, there is a team of student representatives who are always happy to help you with their experience.

I.1.1 Structure & Organization

At the top is the Federal Representation ("BV" for Bundesvertretung). All ÖH Contributions are sent to the BV, which then distributes them to the respective university representation ("UV" for Universitätsvertretung). The BV sets general guidelines and defines the tasks of the respective UVs.

The university representation is responsible for the overall organization of the ÖH at the respective university. Like the BV, it is determined every two years in the ÖH election of parliamentary factions or lists. The UV determines, for example, which departments are established at the university.

The faculty representation (FakV) is subordinate to the UV. There are the following faculties at JKU:

SOWI Faculty of Social and Economic Sciences

RE Faculty of Law

TNF Faculty of Science and Technology

MED Medical Faculty

Each of these faculties has its own faculty representation, which is composed of elected members of the respective student representatives. The FakV is responsible for the organization within its own faculty and serves as a coordinator for the student unions (StV). It also acts as the link between the student unions and the university representation.

The student representatives are your first point of contact if you have any problems with courses or lecturers, or if you have any questions about your studies.

I.1.2 Contacts

The individual student unions hold office hours (Consulting cafés) at the ÖH TNF office (TNF-Kammerl in the Kepler building, see Section I.1.3 on page 7)

Faculty representation TNF tnf@oeh.jku.at	All study programs
StV Artificial Intelligence ai@oeh.jku.at Tuesday, 12:00–13:30	Artificial Intelligence (BA, MA) Bioinformatik (BA)
StV Chemistry chemistry@oeh.jku.at To be announced	Chemistry and Chemical Technologies (BA, MA) Biological Chemistry (BA, MA) Polymerchemistry (MA) Management in Chemical Technologies (MA)
StV Elektronik- und Informationstechnik elektronik@oeh.jku.at Monday, 12:00–13:30	Elektronik und Informationstechnik (BA, MA)
StV Informatik informatik@oeh.jku.at Wednesday, 12:00–13:30	Informatik (BA) Computer Science (MA)
StV Kunststofftechnik & Maschinenbau kunststofftechnik@oeh.jku.at maschinenbau@oeh.jku.at Monday, 13:45–15:15	Nachhaltige Kunststofftechnik und Kreislaufwirtschaft (BA) Maschinenbau (BA, MA) Polymer Technologies and Science (MA) Sustainability and Plastics Management (MA)
StV Lehramt lehramt@oeh.jku.at Wednesday, 13:45–15:15	Lehramt Sekundarstufe (BA, MA) PhD in Education
StV Mathematik & NaWi-Tec mathematik@oeh.jku.at nawitec@oeh.jku.at Tuesday, 10:15–11:45	Technische Mathematik (BA) Naturwissenschaftliche Grundlagen der Technik (BA) Computational Mathematics (MA) Industrial Mathematics (MA) Mathematik i. d. Naturwissenschaften (MA, auslaufend)
StV Mechatronik mechatronik@oeh.jku.at Monday, 12:00–13:30	Mechatronik (BA, MA)
StV Medical Engineering medeng@oeh.jku.at Thursday, 10:15–11:45	Medical Engineering (BA, MA)
StV Physik & MoBi physik@oeh.jku.at mobi@oeh.jku.at Thursday, 13:45–15:15	Technische Physik (BA) Molekulare Biowissenschaften (BA) Physics (MA) Biophysik (MA) Molekulare Biologie (MA) Nanoscience- and Technology (MA, auslaufend)
StV Doktorat TN tnf-doktorat@oeh.jku.at	Doktoratsstudium Naturwissenschaften Doktoratsstudium Tech. Wissenschaften

I.1.3 The TNF-Kammerl

The TNF-Kammerl has two rooms and is the office of the ÖH TNF. During office hours, you can exchange ideas with your student representatives and other students over coffee and cake. If you have any questions but don't have time to stop by in person, send an email to your student union or to the ÖH TNF (tnf@oeh.jku.at) and we will arrange a separate appointment for you. The TNF-Kammerl is located in the Kepler building/lecture hall diagonally opposite the Sparkasse branch (exact room number: HT 021E).



I.2 Studying at TNF

I.2.1 4 steps to studying at JKU TNF

All beginnings are difficult, even when studying. To make things easier, here is the start of your studies in 4 steps. These steps should serve as a guide for the first few months at JKU. You can find further details in this brochure, online on the websites listed, or by emailing us.

- Use the online registration form. This will enroll you in your desired field of study and assign a matriculation number to you that will accompany you throughout your university life. It will also ensure that your JKU Card is sent to your home address. (www.jku.at/en/degree-programs/prospective-students/register-to-enroll/)
- Pay the ÖH Contribution (only possible by bank transfer – further information can be found in KUSSS under “Tuition fee” or at my.jku.at/fee).
- Register for courses in KUSSS (kuss.jku.at) and attend first session of each course (even if attendance is not mandatory, or if you have been assigned to a different group or no group at all).
- Ask your student union about further steps, such as credit transfers. This works best over a cup of coffee in the TNF-Kammerl. Just stop by at our Consultation cafés or send us an email.

Optional:

- Visit the student counseling days and get valuable tips before you start your studies.
- Set up your email address (more information under Section I.3.2.2 on page 20)
- Take part in the first semester mentoring: Meet new people and gather insider knowledge about leisure activities at the university (more information will be available at the beginning of the semester and at Section I.3.8 on page 24).
- Visit the ET-Mensafest and celebrate the start of your studies in style
- Check with our department for social policy for possible subsidies and grants.

I.2.2 Studienhandbuch

The study guide (studienhandbuch.jku.at) describes the individual courses offered at JKU. It specifies which degree program a course belongs to, what content is taught, how the grad is achieved, and some other information.

I.2.3 JKU Campusmap

Lecture Halls and Seminar Rooms The naming of seminar rooms follows this pattern:

1. A building code consisting of up to three characters
2. followed by the floor number (99 refers to the basement)
3. followed by the room number.

Lecture halls do not follow this pattern, they are simply abbreviated with "HS".

Examples:

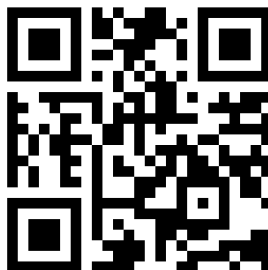
- S3 219 → Science Park 3, 2nd floor, room 19
- BA 9910 → Bankengebäude, basement, room 10

BA	Bankengebäude	BA 9907, BA 9908, BA 9909, BA 9910, BA 9911, BA 9912
HF	Hochschulfondsgebäude	HF 9901, HF 9904, HF 9905
HG	Hörsaalgebäude	HS 9 , HS 10
HT	Hörsaaltrakt	HS 2 , HS 3 , HS 4 , HS 5 , HS 6 , HS 7 HT 117F, HT 176G
J	Juridicum	
K	Keplergebäude	HS 1 , K001A, K009D, K012D, K033C, K034D, K112A, K153C, K224B, K269D
KG	Kopfgebäude	KG 512
MZ	Managementzentrum	HS 15 , HS 16 , HS 17 MZ003A, MZ003B, MZ005A, MZ005B, MZ112B, MZ412A
LIT	LIT Open Innovation Center	Stufensaal
P	Physikgebäude	HS 8 , P004, P125
MT / S1	Mechatronik Science Park 1	MT 127, MT 128, MT 226, MT 226/1, MT 327
S2	Science Park 2	S2044, S2046, S2048, S2053, S2054, S2059, S2274, S2120, S2219
S3	Science Park 3	HS 18 , HS 19 S3047, S3048, S3055, S3057
S4	Science Park 4	S4025
S5	Science Park 5	S5101, S5102, S5103
T	TNF-Turm	HS 11 , HS 12 , HS 13 , HS 14 T 405, T 406, T 406/1, T 911
Mensa, UC	Uni-Center	Festsaal A–B, Loft B–D, UC 6, Besprechungsraum 1–6

If you still don't know where a room is located at JKU, you can easily search for the room name using the dynamic ÖH JKU room search. You can find it at oeh.jku.at/rooms. At jkuroomsearch.app/, you can also search for seminar rooms and lecture halls that are currently available, in case you need a place to study.



ÖH JKU Room Search
oeh.jku.at/rooms



JKU Room Search
jkuroomsearch.app

Study zones Almost every building at JKU has areas for students with seating and tables. The largest study zone is, of course, the Learning Center above the library. You can find all other learning zones at www.jku.at/en/campus/services/study-zones/. For group work, we particularly recommend the bookable glass boxes in the Learning Center and the group rooms in the library (www.jku.at/en/library/service/infrastructure/study-spaces/).

There is also a study zone in the library that is open 24 hours a day, including weekends, as well as the Learning Center, which is located above the main library. Your JKU Card must be activated for the 24-hour study area: www.jku.at/en/library/service/infrastructure/24-7-study-zone/.

Porter The porter is located on the ground floor of the Kopfgebäude. The porter's office is staffed around the clock. In addition to controlling access to the campus, the porter also runs a lost and found office. If you lose your JKU card, for example, there is a good chance you will find it at the porter's office.

External locations In addition to the JKU campus, there are other external locations such as the Hagenberg campus, the MED campus, Gruberstraße, the Petrinum, and rooms in the various student residences—see Section I.3.10 on page 27.

I.2.4 The academic year – dates and deadlines

Information about dates and current deadlines can be found on the JKU website at www.jku.at/en/degree-programs/students/dates-deadlines/.

Here are important dates for the winter semester 2025/2026:

Registration for bachelor's degree program WS	7 Jul 2025–5 Sept 2025
Preliminary Course offer	4 Aug 2025
Main enrolment period WS TNF	9 Sept 2025, 07:00–26 Sept 2025, 23:59
Semester start WS	1 Oct 2025
Allocation results	2 Oct 2025
Course start	6 Oct 2025
Christmas break	22 Dec 2025–6 Jan 2026
Semester interim	1 Feb 2026–1 Mar 2026
Semester end WS	28 Feb 2026
Period without Courses or Exams	Sundays, federal holidays, and the 02.11.2025

Important note regarding course registration: Course registration for the various faculties is staggered across multiple days. Only the start date for TNF courses is given above. If you want to take courses from other faculties, please check www.jku.at/en/degree-programs/students/start-your-studies/course-registration/ to find out when registration is opened.

Please also note that different deadlines may apply at other universities (PLUS, PHs, etc.). This is particularly relevant for degree programs that are organized in cooperation with several universities.

I.2.5 JKU Card and Service Points

The JKU Card is your digital student ID card. With this card, you can take advantage of a wide range of university services. It also serves as:

Library card for borrowing books from the library

Cafeteria card your cafeteria discount (see Section I.3.3 on page 21) is stored on the card and can be linked to your ATM card.

Parking ticket with the JKU card, you can open the barrier to the parking lot. In addition to the daily rate, there is also a semester ticket for students, which can be purchased at the Service Desk in the Kepler Hall.

24 hours study zone to access the 24 hours study zone, you have to enable this service at the Service Desk in the Kepler Hall.

Service Points To use your JKU Card, you must first activate it at one of the electronic service points (or "card terminal") located throughout the campus. The new expiration date and, if applicable, an "M" for the cafeteria bonus will also be printed on the card, as there are places that only visually check your student ID (e.g., the KHG cafeteria, see Section I.3.3 on page 21). To be able to use all the services of your JKU Card, you must reactivate your card each semester after paying your tuition fees or ÖH Contribution. There are additional service points in the Petrinum, LiLes, Med Campus I, and at the distance learning locations in Bregenz, Villach, and Vienna. You can find all locations here:



www.jku.at/en/degree-programs/students/start-your-studies/get-your-jku-card

I.2.6 Kepler University Study Support System (KUSSS)

KUSSS (kuss.jku.at) is the registration system for students. During the registration period – see Section I.2.4 on page 13 – you can register for courses here. The system also checks whether the prerequisites for a course have already been met. This means that you decide for yourself which courses you want to attend!

Once you have taken an exam, you will also receive your grade here. This allows you to track your entire academic progress in KUSSS. KUSSS also offers the option of subscribing to a calendar with your personal course and exam dates.

During the semester, we recommend using myJKU (my.jku.at), a more user-friendly KUSSS interface with some additional features.

I.2.7 Types of courses

VO/VL Lectures are courses in which the material is usually taught in the form of presentations. Although attendance is not mandatory, regular attendance is recommended for a better understanding of the material. At the end of the lecture, there is a written exam and/or an oral exam.

UE Exercises are held alongside lectures and serve to reinforce the material presented using examples. In most cases, there are homework assignments that must be completed independently.

PR During a practical course, you will put your theoretical knowledge into practice and, for example, set up a measuring circuit.

KV Combined courses are, as the name suggests, a mixture of lectures and exercises. The subject area is explained in a lecture and learned in a practical part.

SE In seminars, students usually work independently on part of the subject area and then present their findings.

Types of Allotment In KUSSS, there are different ways to get assigned to a course after registering. The type of allotment is indicated at the top of the KUSSS registration page for each course.

Assignment by order First come, first served. The time of registration is essential. If a registration is changed (e.g., by changing the exercise group), the time of the last change is used.

Direct allocation As with allocation by order, the time of registration is decisive. However, the registration is carried out immediately.

Allocation by priority number The time of registration is irrelevant, as the waiting bonus and the part-time bonus are decisive here. If there are still too many people with the same ranking, a random number will decide.

There are only a few compulsory courses in the TNF that offer too few places for all interested students. Therefore, priority numbers do not play a significant role for us. However, especially in the case of free courses, particularly language courses, the number of places available is often very limited. Further information can be found at www.jku.at/en/degree-programs/students/kusss/kusss-faqs/class-allocation/.

Exams and Attempts If you want to take an exam, you usually have to register for it in KUSSS. If you change your mind later and decide that you do not want to or cannot take the exam, please withdraw from the exam in time or inform the examination board by email.

In general, you have five attempts (only four in the studies Introduction and Orientation phase (STEOP)) for each exam/course. You cannot receive a negative grade if there is nothing to grade (e.g. you don't attend or hand in an empty sheet without even your name on it). For lectures, you have the option of taking the exam before a commission on your third attempt. This means that two additional professors will correct the exam. The fourth and fifth attempts are always taken before a commission. If you have not passed the exam/

course after the fifth attempt, you will not be able to complete your studies.

Please note that for degree programs at several universities, fewer attempts may be available for each exam/course. If you encounter any problems, please contact your student representative in good time.

Minimum number of credits Starting in the 2022/2023 winter semester, all first-year students in bachelor's and diploma programs are required to earn at least 16 ECTS credits in their first four semesters.

The ECTS credits required to achieve the minimum after four semesters can be earned in the winter semester until March 31 and in the summer semester until October 31. Further information can be found at www.jku.at/en/degree-programs/students/minimum-number-of-credits/

Free LVAs In addition to compulsory subjects and subjects that you choose to deepen your knowledge in a specific field, your studies also include so-called "free courses" (or "autonomous course requirements" in some documents). The number of free courses you are required to complete is specified in your curriculum in ECTS.

For free courses, you can earn ECTS credits from all courses at JKU that are not listed in your compulsory subjects. You can also have subjects from other universities (e.g., from abroad) credited as free courses.

Many students attend the course *Scientific Writing and Layout with LaTeX*, which teaches basic knowledge of the program LaTeX.

In addition, language courses are offered at JKU, which are often used as free courses and can be particularly useful for stays abroad.

I.2.8 Completion of the bachelor's program

It will still be a while before you complete your bachelor's degree, but we would like to let you know a few things in advance that you shouldn't miss. Further information on what needs to be done upon graduation can be found at www.jku.at/en/degree-programs/students/degree-completion/.

How do I complete my bachelors degree? The curriculum lists all courses required to complete the bachelor's degree program. The study guide (studienhandbuch.jku.at) contains a complete list of all compulsory and elective courses:

Once you have completed all courses and your bachelor's thesis, you can apply for your bachelor's degree at the Examinations and Recognition Service (pruefung-tn@jku.at). The bachelor's program is completed on the date of the last required course grade.

How and when can I find a bachelor thesis? Usually, you work on your bachelor's thesis during your final semester. Of course, you can also start earlier.

A bachelor's thesis is always supervised by an institute. Many institutes list available thesis topics on their websites, and course instructors occasionally point out current topics in their courses. Once you have found a topic this way, it is advisable to arrange an appointment for a meeting with a member of the institute's staff by email. Of course, many institutes also allow you to submit your own well-considered topic suggestions. A bachelor's thesis can also be written externally (e.g., at your company). However, you must first find an institute that will supervise your thesis and ultimately evaluate your work.

Some student unions organize an annual bachelor's information event for you, where, in addition to general information, institutes also present their research fields and available topics. Another source for finding topics is the ÖH JKU thesis exchange at oeh.jku.at/en/services/market/scientific-work.

What do I need to submit to the Examinations and Recognition Service? Before you go to the Examination Department, you must fill out the examination roster. This can also be found at www.jku.at/en/degree-programs/students/degree-completion/. All grades and the corresponding exam dates must be entered in the roster. In KUSSS under *Exams - Help Examinations Roster*, you can print out a help sheet that lists your courses in a structured manner according to the current exam roster.

Is it possible to take courses from the master's program? Yes, it's possible! In many cases, courses from the master's program are offered as specialization subjects in the bachelor's program. Once you have earned 150 ECTS credits in your bachelor's program, you can take all courses in the first year of the ideal master's program. However, in order not to completely lose track of your study schedule, we still recommend that you complete your bachelor's degree in a timely manner and only then fill your semester with courses from the master's curriculum.

Watch out! If you have already completed master's courses during your bachelor's degree, you should not enter these as free courses in the examination roster for your bachelor's degree! Otherwise, it will be very difficult to complete your subsequent master's program!

How are the final grades for the bachelor's degree certificate calculated? The certificate consists of overall grades for the subjects, which are broken down in the respective examination roster. The overall grade for subjects consisting of several courses is calculated by the examination service as follows:

- Sum of the course grades multiplied by the corresponding ECTS credits
- Division by the total number of ECTS credits for the subject
- The result is rounded if necessary, with results of .5 or higher being rounded up.
- Courses that are completed with a "pass" are not included in the overall grade. In order for an overall grade to be calculated, at least half of the courses in the subject must be graded.

Next steps and admission to the master's program It usually takes 1-2 weeks for the examination service to process the examination roster. Once processing is complete, you will find your final grades with your other grades in KUSSS. You can find your bachelor's degree certificate online at my.jku.at. Once you have completed your studies, you can now register for the master's program with the admissions office (jku.at/zus).

If your master's program builds directly on your bachelor's degree, you can also register for your follow-up studies directly by noting this in the bachelor's examination roster – in this case, the general admission deadlines do not apply, and you can switch to your new program immediately upon graduation.

Important for the period between your bachelor's and master's degree Please note that you are not officially considered a student during the period between your bachelor's degree (i.e., the date of your last exam or the date your last transcript was issued) and your enrollment in a master's program. This means that you are not allowed to take any exams or write any tests during this period. If this cannot be avoided, you should speak to the examining professor in advance to see if they can issue your grade with a different date. This should not normally be a problem. Furthermore, you are no longer insured via the ÖH, as you are not a student.

If you check the box for “consecutive studies” in your exam schedule, the change will usually work without your student status being paused.

I.3 Around your studies

I.3.1 Preparation courses for students at TNF JKU

To make it easier for first-year students to get started at TNF, preparatory courses are offered before the actual start of the program. These courses cover the essential content of high school curriculum in condensed form and prepare students for the introductory lectures. For first-year students without programming experience, the foundation for successful participation in programming courses is laid.

Participation is voluntary. Since experience has shown that prior knowledge varies, the preparatory courses are particularly aimed at those first-year students who want to fill specific gaps in their knowledge or whose high school graduation was some time ago.

The JKU offers the following preparation courses for the winter semester:

- Mathematics for various degree programs
- Immersion course – Mathematics for students of electronics and information technology, sustainable plastics technology and recycling management, mechatronics, and medical engineering (during the semester, from October to December)
- Physics Introduction Week
- Physical fundamentals of electrical engineering and mechanics
- Practical programming skills (Java) and Python programming (specifically for AI)

You can find more information about all preparation courses at www.jku.at/en/degree-programs/students/preparation-courses/.

I.3.2 Wi-Fi, eduroam, email and software for students

When you enroll, the JKU will provide you with a JKU account. This account gives you access to an email address, Wi-Fi, KUSSS, Moodle, etc. This means that you can log into all university services with your username and password.

Your username is *k<matriculation number>*, e.g. *k01234567*. You can set or change your password at account.jku.at. For more information, visit help.jku.at/im/en/jku-account/.

Wi-Fi and eduroam There are two Wi-Fi networks on campus: JKU and eduroam. Once connected to the JKU network, you are prompted to log in to a website with your JKU account. This connection is unencrypted and limited to one device at a time.

eduroam (short for Education Roaming), on the other hand, is encrypted and offers you an internet connection for multiple devices simultaneously at all participating universities worldwide (over 50 Austria alone). To set eduroam on a device, use eduraom CAT (Configuration Assistant Tool). You can find instructions for your operating system at help.jku.at/im/en/netzwerkzugang/campus-wireless-lan. You will need your eduroam password, which

must first be set at account.jku.at. Once your device is set up, you can use eduroam worldwide without further registration.



How to set up eduroam

[help.jku.at/im/en/netzwerkzugang/
campus-wireless-lan](https://help.jku.at/im/en/netzwerkzugang/campus-wireless-lan)



how to set your eduroam password

[help.jku.at/im/en/jku-account/
eduroam-account](https://help.jku.at/im/en/jku-account/eduroam-account)

For general questions, please contact the Student Advisory Service directly.

Email All students have an email forwarding service from JKU. This allows you to register for services that offer special conditions for students, such as software licenses. All emails sent to this address are forwarded to the private email address registered in KUSSS. Further information can be found at help.jku.at/im/en/e-mail-kalender/e-mail-fuer-studierende/.

Software for students During your studies, you may need software to complete assignments for some courses. In these cases, you will usually be told in the LVA where the required software is available. You can find a small selection of the software available at help.jku.at/im/en/software/software-fuer-studierende/

There you will also find information on how to obtain the **Microsoft Office 365** Apps package for JKU students.

Printing on campus The cheapest place to print is the ÖH Shop during opening hours in the Kepler building near HS 1: oeh-jku-shop.myshopify.com/en/pages/preise
Outside of opening hours, publicly accessible printers are available on campus: www.jku.at/en/campus/services/copy-and-scanning-services/
You can also have your thesis and other documents printed and bound at the ÖH Shop or at the JKU photocopying service: www.jku.at/en/services-department/

I.3.3 ÖH Cafeteria discount, Cafeterias and Cafés

If you study hard, you also need to eat. Since this can be very expensive, the ÖH Cafeteria discount was introduced a few years ago. With this bonus, you can get meals or vegetable plates in the cafeteria at a significantly reduced price.

You can apply for the cafeteria bonus in KUSSS under *Personal Data - Cafeteria Bonus*. The next time you visit a service point (card terminal), an "M" will be printed on your JKU card next to the date.

- The **JKU cafeteria** is located in the Uni-Center. Here you can choose between two menus and the cafeteria buffet. www.mensen.at/
- The basement of the JKU cafeteria also houses the **Linzer Uni Inn ("LUI")**, the ÖH JKU student bar. In addition to a large selection of cold drinks, coffee, pizza, and toast are also available here.
- The **KHG cafeteria** is located on the ground floor of the KHG student residence—here, too, there are two menus to choose from:
www.dioezese-linz.at/khg/mensa/menueplan
- The **Raabheim cafeteria** is located in the Raabheim. The menu is available online at www.sommerhaus-hotel.at/de/linz#restaurant
- The **Ch@t-Cafe** is located in the Kepler building/lecture hall wing and offers a variety of pastries as well as a different soup every day and the cafeteria menu.
www.mensen.at/
- The **Science-Cafe** is located on the ground floor of Science Park 3. It also offers pastries and the cafeteria menu. www.mensen.at/
- The **Teichwerk** is hard to miss as it floats in the pond. It serves breakfast as well as full meals, albeit at slightly higher prices than elsewhere on campus. dasteichwerk.at
- The SPAR Digital Flagship Store is located in the Open Innovation Center. www.spar.at/standorte/spar-linz-4040-altenberger-str-69

I.3.4 Helpful services

The ÖH JKU offers several helpful services, which we will briefly introduce here. We are always happy to help you as your first point of contact, but there are also trained experts on various topics in so-called departments across the university.

- **Department for Social Policy:** They are experts on various topics such as financial aid and tuition fees, accessibility, insurance, and much more.
- **Department for Migration and Integration:** If you are a student from abroad, the ReMi can help you with visas and admissions, additional tests, etc., but also with integration in general.
- **Department for Education and Social Law:** If you have questions about university law, you can contact this department.
- **Department for Women, Gender, and Equal Treatment Issues:** This department can help if you are confronted with discrimination or sexual harassment.

You can find more departments at oeh.jku.at/oeh-jku/en/departments.

In addition, the ÖH JKU offers a free **plagiarism check**, professional **consulting** with law firms (tax consulting, general legal advice), help with budget planning, and **markets** (jobs, apartments) – check out the ÖH website (oeh.jku.at/en/oeh-services) for more information!

Your ÖH membership fee also provides you with **liability and accident insurance** at the university, on your way to the university, and in the student residence – for more information, visit the ÖH Federal Representation website: www.oeh.ac.at/en/service/oeh-insurance/

I.3.5 Institute Integriert Studieren

The Institute Integriert Studieren (IIS) is a service and support center for students with disabilities, chronic illnesses, and neurodiversity. They can help you if, for example, you need extra time for exams due to dyslexia, require writing assistance, or would like to take your exam in a separate room due to your neurodiversity.

Simply contact www.jku.at/en/institute-integriert-studieren/ for support services tailored to your specific case!

I.3.6 Help with mental health issues

Studying comes with stress and a lot of pressure to perform: Your Mental Health is more important than any grade. If you don't feel well, here are some resources that can help you out.

- **Psychologische Studierendenberatung:** (www.studierendenberatung.at/standorte/linz/ueberblick) [German only] The psychological counseling service is located at JKU and can help with study-related issues, but it is also a general point of contact for personal problems as well.
- **ÖH Helpline:** (www.oeh.ac.at/en/helpline) [German and English]: The federal student representation is providing free counseling. You can either talk to a professional over the phone or make an inquiry online to get a consultation in person.
- **Upper Austrian Crisis Helpline:** (www.krisenhilfeooe.at) [German only] The government of Upper Austria has a service available to call or chat 24/7 if you or your friend is in any psychological crisis.
- **Helplines for Women:** (www.frauenreferat-ooe.at/439.htm) [some in English] The Department for Women of the government of Upper Austria is providing a list of resources specifically aimed at women who find themselves in a crisis situation.
- **Helpline for Men:** (maennernotruf.at) [only in German] The Männernotruf can be called for free 24/7 for men who experience abuse or other personal problems.

If you take therapy sessions, ÖH also covers parts of your costs via the **ÖH JKU Mental Health Fond:** oeh.jku.at/mental-health

You can also pause your study ("Beurlaubung") and reduce your ECTS load. Our teachers are usually very understanding if you need to drop a course for mental health reasons – much can be resolved in a chat.

I.3.7 USI – University Sports institute

The University Sports Institute (USI) at JKU Linz offers numerous courses in various sports during the semester, most of which take place weekly, at affordable prices. The extensive range includes popular sports such as volleyball and climbing, as well as some martial arts and various dance courses. Training begins in the winter semester on October 1, and registration is possible online from mid-September. In the summer semester, classes start on March 1, and registration begins in mid-February. The USI also has a fully equipped gym with strength and cardio equipment. For more information, visit www.jku.at/en/campus/recreation/usi-sport-classes-programs/.

I.3.8 First Semester Mentoring

The first semester mentoring ("ET" for Erstsemestrigen-Tutorium) is another point of contact for you in your first semester. The aim is to make it easier for you and all other first semester students to get started with your studies and, above all, with social life at JKU.

A group of motivated students from the TNF, who also once stood at the beginning of their studies, will accompany you through your first semester. You can choose freely from a number of groups at our welcome day in the first university week. If you don't have time for the welcome day, you can simply send an email to benjamin.lehner@oeh.jku.at and you will be assigned to a group, taking your preference into account, of course.

Your mentoring group will offer you weekly meetings to get to know other freshmen and university life and to escape the everyday life of studying. The group's joint activities range from cooking, game nights, ice skating, barbeques, bowling, cinema, movie nights, partying and bar tours.

All activities are voluntary, and you are not obliged to attend if you don't have time. We want every group event to be fun, we want to be your point of contact for any questions you may have and we want to offer help where you need it.

The TNF's first semester mentoring program is organized in cooperation with our department for Student counseling. You can, of course, choose your mentoring group freely, regardless of your course of study, or attend multiple groups. A list of all first semester mentoring groups (not just TNF) can be found here:



first semester mentoring program

oeh.jku.at/oeh-wiki/erstsemestrigen-mentoring

If you have any questions about TNF mentoring for first-semester students, please contact Benjamin Lehner (benjamin-lehner@oeh.jku.at).

For general questions about the mentoring program, please contact the department for student counseling directly (studienberatung@oeh.jku.at).

I.3.9 Events

Anyone who completes a technical degree faces one of the most difficult challenges that can be overcome at university level. To balance this out, there must of course be some distraction. The ÖH TNF organizes a number of social events for this purpose. Here is a rough overview of some events, but the list is by no means complete. To make sure you don't miss any events, keep an eye out for invitations in your emails, check the channels of your student union, or follow us on Instagram:



ÖH TNF Instagram
www.instagram.com/oehtnf

Welcome parties: In mid-October, we will be hosting the TNF Welcome parties in the basement of the cafeteria. All students and lecturers from the respective course of study are invited. The Welcome parties are, of course, intended especially for first-semester students to get to know people from higher semesters. The Welcome parties for the individual courses of study will take place in the basement of the cafeteria on three consecutive days. You will find out which of the three days is your turn in the invitation. There will be free food and drinks, you will only need a little cash for the cup deposit.

In addition, one of the mechatronics institutes, together with the student union, organizes the annual "Beer and Pretzels" festival for the departments of mechatronics, electronics, and plastics engineering & mechanical engineering.

Furthermore, at the beginning of the winter semester, the Medical Engineering Kick-off takes place, where information about the program is provided.

Christmas booth: The ÖH TNF punch booth has become a fix part of our winter semester. It usually takes place on Tuesday in the second week of December under the canopy of the Keplerhall. We spoil you with delicious homemade punch and mulled wine. We also cater for your hunger: as befits a punch booth, we offer delicious homemade cookies and raclette bread.

JKU GAMES: The ÖH TNF organizes the JKU GAMES every semester. Divided into LAN and DICE, a weekend is spent playing pen-and-paper games, puzzles, various group games, and LAN party with and against each other. If you would like to participate, visit games.oeh.jku.at/ for more information.

StV Barbeques: Similar to the welcome parties in the fall, your StV organizes a barbecue in the summer semester, to which students and teachers from the respective course of

study are invited. Similar to the welcome parties, the StV barbecues take place over three days and offer you free food and drinks. You can find more information in the invitation.

ÖH TNF Summer Barbeque: Once a year, there is the big traditional ÖH TNF summer barbecue. This takes place at the beginning of June. Highlights of this event include: suckling pig, meat from Bio farms, vegan/vegetarian food, live ice cream cooking on site with liquid nitrogen, and much more. This event is the flagship of the ÖH TNF and is very well attended every year. For more information, visit oeh.jku.at/tnf/bbq.

Eval-Day: Once a semester, we organize the Eval-Day. This is intended to give you the opportunity to wind down the semester with other students and evaluate the courses you have attended. By participating in the evaluation, you provide professors with important feedback that will help them improve their courses in the future. Even if you had no complaints about a course, it is important to let the university know exactly that. To make filling out the questionnaire a little more enjoyable, we invite you to join us for coffee and non-alcoholic punch in the winter semester and fruit and milk ice cream in the summer semester. Snacks and plenty of outlets to charge your devices will of course also be provided.

I.3.10 Student dorms & bars

Internationales Studierendenzentrum Julius Raab (Sommerhaus)

- Address** Julius Raab Straße 10, 4040 Linz
- Website** www.studentenwerk.at/studenten/raab
- Bar** available; Mensa open on weekdays
- Insider** The dormitory has a fitness room and gyms, which can be used as part of the sports program of the University Sports Institute (USI). For more information see Section I.3.7 on page 23.

WIST

- Address** Johann Wilelm Kleinstraße 72, 4040 Linz
- Website** wistooe.at/haus-barbara
- Bar** No bar
- Insider** In the summer semester the popular Wist Summer Party takes place.

Evangelisches Studierendenheim (ESH)

- Address** Julius Raab Straße 1–3, 4040 Linz
- Website** www.esh.jku.at
- Bar** No bar
- Insider** There are also seminar rooms in the basement of the ESH.

Katholische Hochschulgemeinde (KHG)

- Address** Mengerstraße 23, 4040 Linz
- Website** www.dioezese-linz.at/khg
- Bar** Mostly Tue., Wed., and Thu.
- Insider** In addition to the cellar bar in the basement, larger parties such as the autumn, spring and summer parties take place every year in the KHG. There are also workshops, lectures, concerts etc. every week.

Johannes Kepler Heim (KEP)

- Address** Altenbergerstraße 74, 4040 Linz
- Website** jk-heim.at
- Bar** On special occasions
- Insider** There are seminar rooms in the ground floor and basement of the KEP

Studierendenheim Akademikerhilfe (AHL)

Address Pulvermühlstraße 41, 4040 Linz

Website www.akademikerhilfe.at/de/linz

Bar Mon., Wed., and Thu. from 9 p.m.

Insider The home is located four tram stops from the university (St. Magdalena) and has a modern home bar with changing specials.

STUWO Student Housing (STUWO)

Address Altenbergerstraße 9, 4040 Linz

Website www.stuwo.at/studentenheime/linz

Bar No bar

Insider The home offers a sauna as well as a fitness room, more on their website.

MILESTONE Linz Brucknerstudios (Bruckner Studios)

Address Peuerbachstraße 28, 4040 Linz

Website www.milestone.net/locations/?city=linz

Bar No bar

Insider The home offers many student typical features, more on their website.

II Details for Artificial Intelligence

Although the study program in Artificial Intelligence at JKU only launched in 2019, it has quickly become one of the largest programs at the university. This rise in popularity is largely due to the excitement surrounding AI, the influential release of Large Language Models like ChatGPT and the general perception that AI is something which will stay and thereby being very relevant for the future. JKU provides the optimal opportunity to dive into this field, by providing a high quality study program which is very accessible due to being an English study program and providing much flexibility with the option of distance learning modes. We, the student union of Artificial Intelligence are happy to offer you this guide in order to ease the start of your journey of pursuing your degree in Artificial Intelligence. In the following chapters, we will try to teach you everything you need to know about studying AI at JKU.

II.1 Start of Studies

Besides the formal registration to your studies, there are especially in the beginning some important topics that you should know about.

II.1.1 StEOP

As a first-semester student, you must complete the StEOP (Studies Introductory and Orientation Phase) which is a collection of a few base-level courses that you have to complete first before you can take further courses from higher semesters. The reason behind this is that some courses of the curriculum are very essential to your further studies (like Math in AI) and it would be very counterproductive to procrastinate them to later semesters. To complete the StEOP you just have to collect at least 9 ECTS Points from the pool in the table below, meaning getting a positive grade there. After that once you received your grades that make up to 9 ECTS points you automatically completed the StEOP.

Few things to consider while you are still in the StEOP:

- you can only complete a maximum of 21 further ECTS from the recommended curriculum of the 1st, 2nd and 3rd semesters
- you only have 3 repetition possibilities (i.e. 4 total attempts) for each examination. After completing the StEOP, this number rises to 5 attempts for each exam

It is therefore highly recommended to complete the StEOP as quickly as possible in order to avoid delays in your studies.

Core StEOp Subjects	Type	ECTS	Semester
Introduction to AI	VL	3	Winter Semester
Hands-on AI I	VL	1.5	Winter Semester
Hands-on AI I	UE	1.5	Winter Semester
Programming in Python I	VL	3	Winter Semester
Programming in Python I	UE	3	Winter Semester
Logic	VL	3	Winter Semester
Mathematics for AI I	VL	6	Winter Semester
Hands-on AI II	VL	1.5	Summer Semester
Hands-on AI II	UE	3	Summer Semester
Algorithms and Data Structures I	VL	3	Summer Semester
Programming in Python II	VL	1.5	Summer Semester
Programming in Python II	UE	1.5	Summer Semester
Mathematics for AI II	VL	6	Summer Semester

II.1.2 AI mentoring program

The AI-Mentoring is a program designed to make it easier for you to start your studies and survive your first semester at JKU: A *“mentor”* (in this context a student of a higher semester) accompanies you in the first weeks as a direct contact point, holds regular meetings together with other first-semester students and is open to all your questions that arise in the daily chaos of your student life. This program aims to answer any question that might occur in your first few weeks, ease the process of getting in touch with other first semester students and giving you insider tips and cheat codes from the experience of the higher semester tutors. Your tutor is so to say your go-to person if you ever feel lost or have questions.

How to register for it?

- In the first lesson of the course **Lecture Series in AI**, the tutors will introduce themselves to you and give you the chance, to choose one of them to be your tutor depending on your schedule and personal preferences.
- Shortly after that the registration will open up on the moodle page of Lecture Series in AI where you have to join the group of your tutor. Make sure to do it in time, some groups might be quickly full and if you miss the deadline, there is no way anymore to join the mentoring program.
- After the registration period ended, you will receive an E-Mail with the invitation to join a Discord-Server, Whatsapp Group or whatever platform the tutor chooses to communicate with you.
- The entire further communication like scheduling meetings, etc. will be then handled via that platform.

The schedule and content of these meetings is up to the individual tutor, but often includes shared Q&A and study sessions, visiting ÖH events together to socialize in a cozy

atmosphere (e.g., during the “Einstandsfest” and the “AI Regulars’ Table”). One of the meetings will also be with a professor in a informal setting so that you see that they are also just humans and open to your personal questions.

It is **strongly recommended to participate** in the program, as it has been shown over the years that it eases the start of your studies greatly and some of the people that you meet there will stick until the end of your studies.

II.1.3 Accreditation

If you have already enjoyed an education that can be accredited in the AI program, you can skip some courses in the first semesters. The grade of an accredited course, according to the following table, is based on the average grade of the corresponding school certificates in the accredited school subject.

Course	Credits	School subject
HTL Informatik (e.g. Grieskirchen, Leonding, Perg)		
Algorithms and Data Structures 1	3VL+1.5UE	Programmieren und Software Engineering (1.-3. grade)
Programming in Python I	3VL+1.5UE	Programmieren und Software Engineering (1.-3. grade)
HTL Informationstechnologie/Informations- und Kommunikationstechnologie (e.g. LiTec, Traun, Wels, Ybbs)		
Algorithms and Data Structures 1	3VL+1.5UE	Softwareentwicklung (2.-3. grade)
Programming in Python I	3VL+1.5UE	Softwareentwicklung (2.-3. grade)
HTL Biomedizin- und Gesundheitstechnik, Ausbildungsschwerpunkt Medizininformatik (e.g. Grieskirchen)		
Programming in Python I	3VL+1.5UE	Medizin- und Gesundheitsinformatik (1.-5. grade)

In order to receive the credits listed above, you have to bring all school certificates to the examination and accreditation service (Bank Building/101B) and apply for them. In case of deviations, problems or questions, please contact:

Jenny Joana Knauth, MA (office@ai-lab.jku.at)

We recommend carrying out accreditation as soon as possible (immediately after enrollment, preferably before the start of the semester). Long wait times of up to multiple months are common.

II.1.4 Starting in the summer semester

Generally, beginning your academic journey during the summer term is not recommended. Nevertheless, we recognize that individual circumstances, such as mandatory military or

civilian service commitments or delays in the admission process for international students might necessitate this choice. In such cases, we advise following the 2nd semester's course schedule from the recommended study plan.

If you're coming in with existing (Python) programming expertise, you can confidently dive into *Programming in Python II*. On the other hand, those new to programming should hold off until the winter term to start with *Programming in Python I*.

On the other hand, attempting *Mathematics for AI 2* without the foundational knowledge from *Mathematics for AI 1* is strongly discouraged. We suggest waiting for the winter term and then starting with *Mathematics for AI 1*, which provides an in-depth exploration of the necessary basics.

While the choice of courses and their timing ultimately rests with you, we emphasize the importance of adhering to the suggested study plan for a seamless learning experience.

For those initiating their studies in the summer term, the following courses are available:

- VL+UE Statistics for AI
- VL Machine Learning and Pattern Classification
- KV Responsible AI

If you have prior programming knowledge:

- VL+UE Algorithms and Data Structures 1
- VL+UE Programming in Python II
- VL+UE Hands-on AI II

Furthermore, students who've already achieved the STEOP through Accreditation (refer to Section II.1.3 on page 31) are eligible to start with Free Electives and/or Area of Specialization courses.

II.2 The AI program

II.2.1 Overview of the Artificial Intelligence Bachelor's Program

The Bachelor program consists of courses worth 180 ECTS, with each of the 6 semesters containing 30 ECTS. While it is certainly possible to finish in just 6 semesters when studying full-time, many students work part time and the majority takes longer to finish their studies. Essentially all courses (except for the Practical Work and Bachelor's Thesis) are only offered either in the Winter Semester (1st, 3rd, 5th semester) or the Summer Semester (2nd, 4th, 6th semester).

Your **Area of Specialization** (12 ECTS in total) must be selected from a pool with a wide variety of possible topics, e.g. Computer and Data Science, Mechatronics, Life Sciences or others. Please visit KUSSS or the study guide website (studienhandbuch.jku.at/curr/1174) for all possible choices. It is possible and encouraged to mix-and-match courses from different pools (e.g. 9 ECTS from Life Sciences and 3 ECTS from Mechatronics).

As your **Free Electives** (9 ECTS in total) you can choose any course offered at JKU or any other EU university.

While you can freely choose in which order to do your courses, there is an officially recommended study plan by JKU, check out the table below. We recommend sticking to the official suggestion, especially in earlier semesters.

Course Name	ECTS	Lecturer
1st Semester		
Hands-on AI I	1.5 VL + 1.5 UE	Dangl + Luukkonen
Introduction to AI	3VL	Fürnkranz
Current Topics in AI	1.5 KV	Hoedt
Technology and Society	3 KV	Werner
Programming in Python I	3 VL + 3 UE	Dangl + Luukkonen
Logic	3 VL + 1.5 UE	Seidl + Schreiner + Windsteiger
Mathematics for AI I	6 VL + 3 UE	Gerardo-Giorda + various
2nd Semester		
Hands-on AI II	1.5 VL + 3 UE	Dangl + Luukkonen
Algorithms and Data Structures 1	3 VL + 1.5 UE	Ferscha
Programming in Python II	1.5 VL + 1.5 UE	Dangl
Statistics for AI	3 VL + 3 UE	Forstner
Machine Learning and Pattern Classification	3 VL	Widmer
Mathematics for AI II	6 VL + 3 UE	Lubbes
3rd Semester		
Artificial Intelligence	3 VL + 1.5 UE	Widmer
Algorithms and Data Structures 2	3 VL + 1.5 UE	Ferscha

Course Name	ECTS	Lecturer
Machine Learning: Basic Techniques	3 KV	Klambauer
Computational Logics for AI	3 VL + 1.5 UE	Seidl + Hofstadler
Machine Learning: Supervised Techniques	3 VL + 1.5 UE	Plattner
Mathematics for AI III	6 VL + 3 UE	Lubbes
4th Semester		
Seminar in AI	3 SE	<Varies by Institute>
Responsible AI	3 KV	Mara + Siedl
Computational Data Analytics	3 KV	Fürnkranz
Learning from User-generated Data	3 VL + 1.5 UE	Schedl
Visualization	3 VL + 1.5 UE	Streit + Hinterreiter + Steinparz
Machine Learning: Unsupervised Techniques	3 VL + 1.5 UE	Hochreiter + Adler + Klambauer + Lin
Machine Learning and Pattern Classification	1.5 UE	Widmer
Numerical Optimization	3 VL + 1.5 UE	Benko
Area of Specialization	1.5	-
5th Semester		
Practical Work in AI	7.5	<Individual Supervision>
Introduction to Computational Statistics	3 VL + 1.5 UE	Bitto-Nemling
Natural Language Processing	1.5 VL + 1.5 UE	Nawaz
Formal Models in AI	3 VL + 1.5 UE	Seidl
Reinforcement Learning	3 VL + 1.5 UE	Cancino Chacon + Primus
Area of Specialization	3	-
Free Electives	3	-
6th Semester		
Gender Studies	3	<Various Courses>
Digital Signal Processing	3 VL + 1.5 UE	Huemer
Area of Specialization	7.5	-
Free Electives	6	-
Bachelor's Thesis	9 SE	<Individual Supervision>

In case you need or wish to diverge from the official study plan (i.e., starting out in the summer term or only studying part-time), the Student Union has developed a **Dependency Tree Diagram** where you can check which courses have which dependencies¹



drive.google.com/file/d/1KVUocX27eGrZW6KofcEMxxD9X3KRWC8-/view

II.2.2 Overview of the Artificial Intelligence Master's Program

For the sake of simplicity, we will only write here the main differences and things to consider for the master program compared to the bachelor program. If you start in the master, it is also highly recommended to read through the other section of this guide.

The artificial intelligence masters program has a regular duration of 4 Semesters with 30 ECTS per semester. While studying you will have to choose one of the following 4 Elective Tracks:

- AI for Simulation
- Embedded Intelligence and Signal Processing
- Symbolic AI and Mathematical Foundations
 - sub-focus "Symbolic AI"
 - sub-focus "Mathematical Foundations"
- AI and Life Sciences

The Elective Tracks makes up roughly a third of your courses in your master. The rest of the courses is the same for each of the elective tracks. To keep it simple, we left out the specific courses of the elective tracks and kept in only the base courses. For specific questions regarding the elective tracks or anything else please refer to the curriculum:

Course Name	ECTS	Lecturer
1st Semester		
Computer Vision	3 VL + 1.5 UE	Bimber
Deep Learning and Neural Nets I	3 VL + 1.5 UE	Klambauer + Hoedt
LSTM and Recurrent Neural Nets	3 VL + 1.5 UE	Hochreiter
AI and Law I	3 VL	Klever + Leitner
Artificial Intelligence in Society	1.5 KV	Daye
Area of Specialization	9	-
Free Electives	3	-

¹Note that there are not legal dependencies, i.e. you can still take a course without its pre-requisites.

Course Name	ECTS	Lecturer
2nd Semester		
Deep Learning and Neural Nets II	3 VL + 1.5 UE	Brandstetter + Freinschlag + Klambauer
Deep Reinforcement Learning	3 VL + 1.5 UE	Medina
Advanced Techniques	3 VL + 1.5 UE	Brandstetter
AI and Law II	1.5 VL	Schumann + Bruckmüller
Robopsychology	3 KV	Mara
Area of Specialization	varies by track	-
Free Electives	varies by track	-
3rd Semester		
Explainable AI	1.5 VL + 1.5 UE	Streit + Hinterreiter + Steinparz
Probabilistic Models	3 VL + 1.5 UE	Widmer
Communicating AI	1.5 KV	Mara
Seminar in AI	3 SE	<Individual Supervision>
Practical Work in AI	7.5 PR	<Individual Supervision>
Area of Specialization	varies by track	-
Free Electives	varies by track	-
4th Semester		
Free Electives	varies by track	-
Master's Thesis Seminar	4.5	<Individual Supervision>
Master's Examination	3	<Individual Supervision>
Master's Thesis	1.5	<Individual Supervision>

When you start your master with a different Bachelor's degree than the Artificial Intelligence Bachelor degree from JKU, you might be required to complete **supplementary courses** during your studies. These courses are core elements of the Bachelor's program, and it is crucial to complete them as quickly as possible². These courses can add up to a maximum of 40 ECTS, depending on from which background you come. It is best to inform yourself on the JKU masters info page or the curriculum in order to determine the category you fall into. The courses can additionally be used for the *Area of Specialization* and *Free Electives* sections of the program, so the credits you earn are not totally wasted.

²*Officially* there is a limit to get these done in two semesters. In reality that might not be possible, e.g., when starting in the summer term, and this requirement is not actually checked or enforced by JKU.

II.2.3 Curricula

As mentioned above, the best resource for any more questions about the study programs are the curricula, which provide legally binding answers to your questions. It is **recommended to read your curriculum** at least once at the start of your studies.

Here are some QR codes that bring you to them.



Bachelor

studienhandbuch.jku.at/text/1174



Master

studienhandbuch.jku.at/text/1180

II.2.4 All of our institutes and How to finish your studies

Once a year in January we organize the **Bachelor Info Evening**: This is a video live stream hosted via Zoom where over the evening every institute introduces themselves and their work. This is the perfect opportunity to get to know all of the available institutes for the Seminars, Practical Works and Thesis courses.

At the very start the student union also gives a short presentation where we explain on how to finish your studies in respect to the thesis, examination roster, and everything else. As soon as you are in the 3rd semester of your Bachelor or the 1st semester of your masters, it is recommended to participate in this event. Of course we also provide recordings:



Bachelor Info Evening

informatik.jku.at/students/aibachelorinfoabend2025

II.2.5 Distance Learning in the AI program

The AI program provides a substantial opportunity for Distance Learning, allowing students to access major parts of the curriculum remotely. All mandatory courses come with a Distance Learning variant. Still, it is mainly designed for students living in or close to Linz, Vienna or Bregenz.

For those residing in Vienna or Bregenz, there are the Distance Learning Centers providing facilities to use during your studies and for examinations. Lecture halls within the *Zentrum für Fernstudien* are furnished with advanced streaming tools, letting students in Vienna or Bregenz attend JKU courses live.

Courses labeled KV (Combined Course) and VL (Lecture) predominantly operate in a hybrid format, allowing for Distance Learning. Almost all mandatory lectures are recorded, and both videos and their associated slides are available on Moodle at moodle.jku.at/.

For courses labeled UE (Exercises), registration specific to Distance Learning is required. The mode of each course can usually be found on KUSSS at kuss.jku.at/ under the 'Mode' section.³

Required physical presence

To start the AI program, students must visit Linz at least once for official enrollment. There will be instances where specific courses demand on-site attendance, either in Linz, Bregenz, or Vienna. Examinations necessitate physical attendance and can be taken in Linz, Bregenz, or Vienna throughout the semester. For many courses, this is only required for the final exam at the end of the semester, but there are some courses requiring mid-term examinations or those that offer other grading schemes only available to those participating regularly in-person.

You can take examinations at any of the following venues:

- **Johannes Kepler University Linz** (Main Campus)
- **Zentrum für Fernstudien Wien**, located at Ehemalige Postsparkasse, Wiesingerstraße 4/2, Stock, 1010 Wien. For more information, visit www.fernstudien.at/wien.
- **Zentrum für Fernstudien Bregenz** located at Belruptstraße 10, 6900 Bregenz. More details can be found at www.jku.at/zentrum-fuer-fernstudien/kontakt/bregenz.

Beyond the mandatory courses, things may get more challenging. Most Area of Specialization courses come from other study programs, and might only be suitable for on-site presence students in Linz. The same restriction applies to free electives.

II.2.6 Study Commission (Studienkommission, StuKo)

The study commission discusses and votes on improvements to the curricula and changes to the program overall. It is composed of 3 professors, 3 representatives of the other teaching staff (academic mid-level employees) and 3 students, sent by the Student's Union for Artificial Intelligence (see below). Currently, it has the following members representing students' interests:

³Not all lecturers accurately maintain this information, often further details are found in the Moodle forum of the respective course.

- Maja Drinovac
- Daniel Kutasi
- Max Walder

Contact the members if you have any feedback on the curriculum or would like to see some changes there. You can reach out either via Discord or E-mail (you will find it below).

II.3 The Student's Union

The Students' Union Artificial Intelligence (Studienvertretung, or simply StV in German) is elected every two years at the ÖH elections. Eligible to vote are all persons who are enrolled in an Artificial Intelligence program (Bachelor or Master). The Students' Union is your first contact point – no matter if there are problems with teachers or a lecture, or if you want to know something else about studying.

You can reach the Students' Union for AI as follows:

- oeh.jku.at/ai is the information page of our Student Union. Here you can find current dates and events.
- ai@oeh.jku.at is available for all questions about studying AI.
- Catch our biggest events on [instagram.com/oehtnf](https://www.instagram.com/oehtnf)
- The **AI-Café**, every Tuesday during the semester from 12:00 – 13:30 in the "TNF-Kammerl", see also the overview table at the start of this guide.
- Join us on **Discord** via the QR code below. With around 6000 members this is a place where you can find and get in touch with most of the people from AI and computer science. On this server you find individual channels for each of the lectures where you can discuss exercises, exams and related topics. Inside these channels you can also find some of the exams from the past years.



discord.gg/wAek576

The Students' Union for Artificial Intelligence is responsible for students of the following studies:

- Bachelor's program Artificial Intelligence
- Master's program Artificial Intelligence

If you want to contact a Student's Union member directly, you can of course do so as well. Our team has the following members:

Mandataries



Maja Drinovac

Chairwoman

maja.drinovac@oeh.jku.at



Benjamin Bergmann

1st Deputy

benjamin.bergmann@oeh.jku.at



Max Walder

2nd Deputy

max.walder@oeh.jku.at



Daniel Kutasi

Mandatary

daniel.kutasi@oeh.jku.at



Simon Haas

Mandatary

simon.haas@oeh.jku.at

Members



Annya Sebastian

annya.sebastian@oeh.jku.at



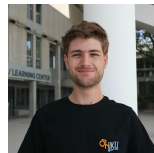
David Fleischanderl

david.fleischanderl@oeh.jku.at



Florian Eder

florian.eder@oeh.jku.at



Florian Keintzel

florian.keintzel@oeh.jku.at



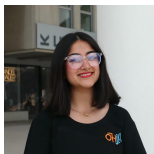
Florian Weigelt

florian.weigelt@oeh.jku.at



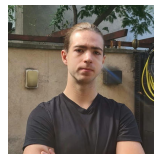
György Milan Papp

gyoergy.milan.papp@oeh.jku.at



Haniyeh Familkarimi

haniyeh.familkarimi@oeh.jku.at



Ivan Shepelev

ivan.shepelev@oeh.jku.at



Janis Traweger

janis.traweger@oeh.jku.at



Jeet Gupta

jeet.gupta@oeh.jku.at



Kacper Zaleski

kacper.zaleski@oeh.jku.at



Laura Legat

laura.legat@oeh.jku.at



Lukas Gandler

lukas.gandler@oeh.jku.at



Marco Pichler

marco.pichler@oeh.jku.at



Markus Vogl

markus.vogl@oeh.jku.at



Moritz Enderle

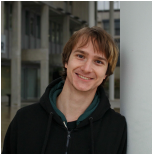
moritz.enderle@oeh.jku.at



Maximilian Schubert
maximilian.schubert@oeh.jku.at



Paula Hasibeder
paula.hasibeder@oeh.jku.at



Robin Gugel
robin.gugel@oeh.jku.at



Robin Koowakaden
robin.koowakaden@oeh.jku.at



Roman Rittler
roman.rittler@oeh.jku.at



Sangeeth Roshan
sangeeth.roshan@oeh.jku.at



Sarah Hauer
sarah.hauer@oeh.jku.at



Sebastian Kranzinger
sebastian.kranzinger@oeh.jku.at



Sebastian Pockenauer
sebastian.pockenauer@oeh.jku.at



Sonja Topf
sonja.topf@oeh.jku.at



Shreif Shouman
shreif.shouman@oeh.jku.at



Swapnil Khandoker
swapnil.khandoker@oeh.jku.at

II.4 Services of the Student's Union for AI

II.4.1 AI Regulars' Table ("Stammtisch")

The Regulars Tables are a nice opportunity to get in touch with other students with a cool drink. The first drink is always on us, so there is really no reason not to come. Just look out for the person with the *yellow hat*, who will give you a token which you can then exchange for a drink at the bar. The Regulars Tables take place usually once a month on a Wednesday

and will be announced on the [Discord](#) or on our oeh.jku.at/ai. Most of the time the event will take place in the [KHG Heimbar](#) in the winter and when temperatures rise halfway throughout the summer semester, we move in the outdoor area ("Gastgarten") of [LUI](#).

II.4.2 AI Cafe ("Sprechstundencafe")

The AI Cafe is a weekly event that takes place in the TNF-Kammerl (more to that in Section I.3.4 on page 22) each Tuesday during the semester from 12:00 - 13:30 in the winter semester of 2025/26. There is free coffee, tea, donuts and cake so you have every reason to hop by. Besides that the main reason why it exists is that we take time to go over all the problems and question that you might face in your studies in a cozy environment. So if you have any kind of question or need any kind of help regarding your studies, this is the time to sort your problems while enjoying a cup of coffee. Some students also just visit it to discuss and talk about the current news in AI or discuss some recent problems they face with a current exercise, so you have plenty of opportunity to get in touch with other students also from other semester.

Note that especially in the first few weeks of the semester the cafe is usually a bit overrun with students, so if you got scared off by that, do not hesitate and join again after week 3-4 of the semester where it is often calmer.

II.4.3 Events

Some other events besides the ones that already got it's own section:

- **NeuIPS Watchparty** in December
- **Bachelor-Info-Evening** in January. An online event designed for Bachelor students of 3rd and 5th semester who are looking for seminar topics, practical works and Bachelor's thesis topics.
- All the big events we organize together with ÖH TNF, such as the **Einstandsfest**, **JKU Games**, and many more, see Section I.3.9 on page 25

Usually all of the events are announced on our [Discord server](#).

II.5 Working while studying

Most people do like to collect some experience in the industry or need to work to financially sustain their studies. While that is perfectly possible during your studies there are a few things to consider:

- Finding a job in Austria, even low-skilled ones, almost always requires you to speak at least some level of German.
- If you are an international student, make sure to research how much work hours your student Visa allows.
- Doing 30 ECTS per semester is equivalent to a full-time job. Having a part-time job next to it can be really difficult. You can easily just do less than 30 ECTS to better combine both things, although your total study time of 6 semester will most likely increase then.
- It might happen that a lecture is held during your work hours, here you can just watch the recordings afterwards.

- Carefully pick exercise classes, they all have there different time slots and attendance (either physical or virtual) is usually mandatory.

If you are looking for a job we can recommend the **Karrieretag** ("Career day") which is organized by JKU. During this event over 100 companies come to JKU where you have the possibility to get in touch with them and ask for job opportunities. They also offer a CV check so if you are unsure if your application makes the right impression, you can let it check from the professionals.

II.6 Conclusion

With that you have heard of the most important facts you need to know of at the start of your studies. We, the student union of Artificial Intelligence hope this guide was helpful and wish you a nice time studying Artificial Intelligence at JKU!

II.6.1 Space for your own notes

